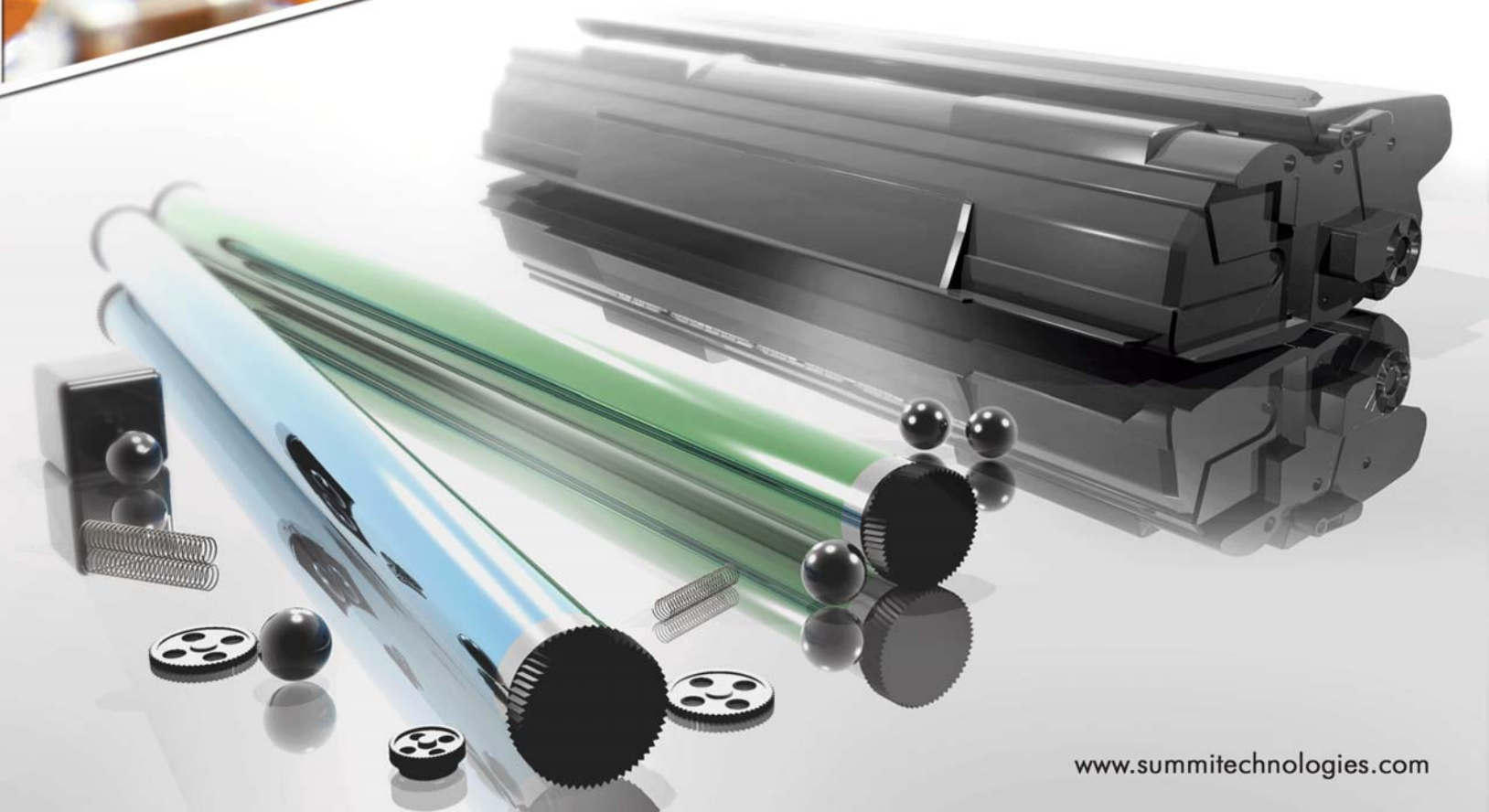
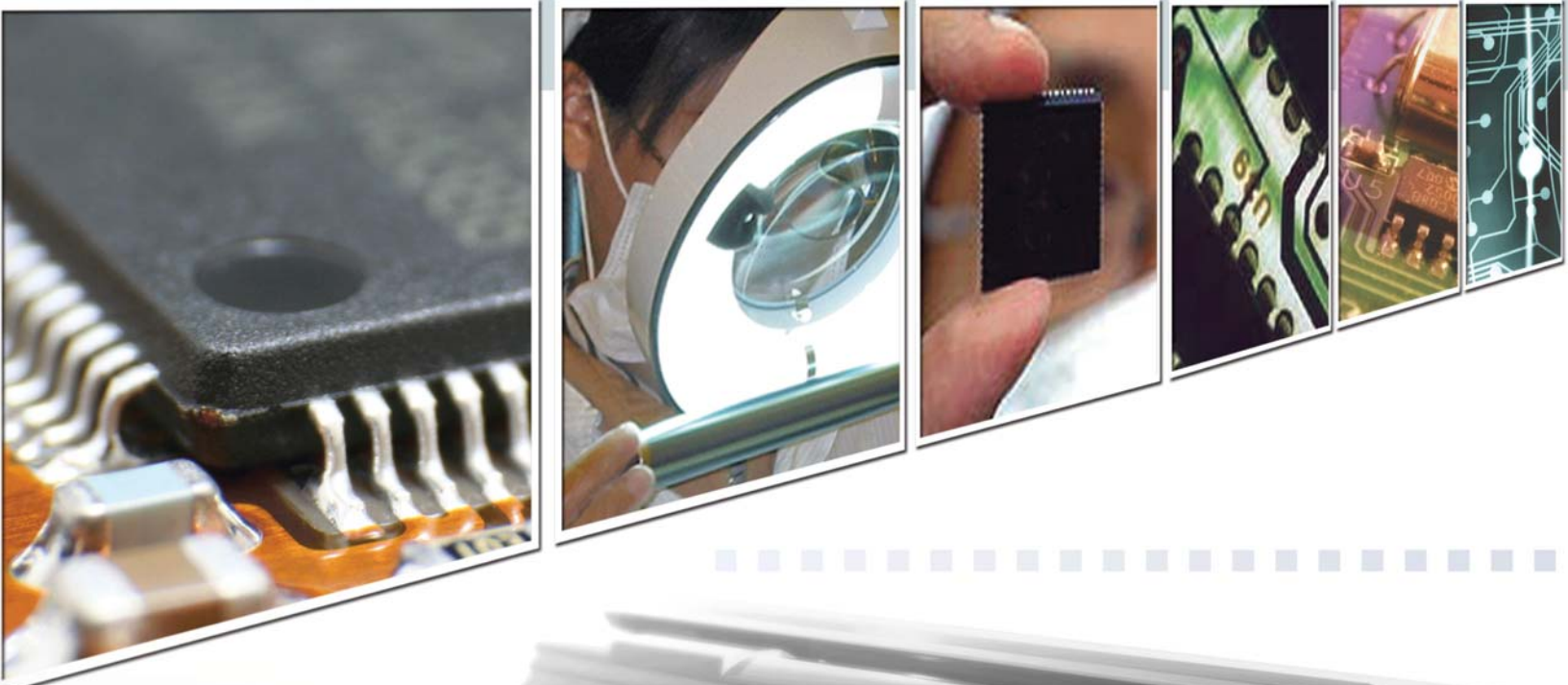


SUMMIT TECHNOLOGIES

Catalog / Technical Reference

Catalog Twenty Three Update





Part#

Description

Ship Qty

Brother HL-720 (TN-250)



2 Cartridge System

Laser Printing Engine Supplies

Engine used in Brother HL-720, and many Brother MFC Fax Machines. See our Cross Reference Guide for more info.

TECH TIP

Summit 720 Toner works in the TN-250, the TN-250 cartridge is physically a little different.

Toner Cartridge Recharging Supplies (TN-200, TN-250, TN300 or TN5000PPF)

720TK Toner Kit Generic 90g for Brother TN-250/200/300/5000 ***6 per case*** *Call for Pricing!*

Universal Replacement Kit

720 Brother 720/250 Toner, Black, 90g ***25 per case***

OPC Cartridge Recharging Supplies (Brother# DR-200/300)

D720GF Replacement Drum for DR-200 with gears *Call for Pricing!*

D300GF Replacement Drum for DR-250/300 with helical gears

RS200 Drum Unit Reset Sheet for use in DR-200/250/300

Brother HL-1240 (TN-460/6600)



2 Cartridge System

Laser Printing Engine Supplies

Engine used in Brother HL-1240, and many Brother MFC Fax Machines. See our Cross Reference Guide for more info.

TECH TIP

Before starting these toner and or drum cartridges, it is CRITICAL that the instructions be read.

Failure to do so will result in cartridge failure.

Toner Cartridge Recharging Supplies (TN-430 or TN460 High Yield)

4656 Universal Brother TN460/560 Toner 210g ***25 per case*** *Call for Pricing!*

DB460 TN460 Doctor Blade

OPC Cartridge Recharging Supplies

D460GH Replacement Drum for DR-400 with gears *Call for Pricing!*

Seals, Packaging, Parts

BOX460 Box for Brother TN-460/560 Toner Cartridge *Call for Pricing!*

PLUG460 Fill Plug for Brother TN-460 100/pk

SS460 Yellow Plastic Mag Cover 10/pk

CLIP460 Retaining Clip for Developer Roller 10/pk

Replacement for the right side OEM clip that is easily lost

DR460C Developer Roller Cleaner TN-460, 8oz

Instructions

DOC0261 Toner Cartridge Recycling Instructions for Brother 1240 *Free with Order!*

DOC0262 Recycling Instructions for Brother DR-400 OPC Unit

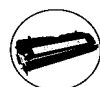
Cartridges

C460T Compatible Brother TN-460 Cartridge *Call for Pricing!*

CM460T Compatible MICR Brother TN-460 Cartridge

C460PB Compatible Pitney Bowes 1630

CDR400 Compatible Brother DR-400 Cart. w/new Drum *(no exchange)*



Part#

Description

Ship Qty

Brother HL-1650 (TN-560/7600)



2 Cartridge System

Laser Printing Engine Supplies

Engine used in Brother HL-1650, and many Brother MFC Fax Machines. See our Cross Reference Guide for more info.



Before starting these toner and/or drum cartridges, it is CRITICAL that the instructions be read. Failure to do so will result in cartridge malfunction.

Toner

4656	Universal Brother TN460/560 Toner, 210g **25 per case**	Call for Pricing!
------	---	-------------------

Drums and Rollers

D460GH	Replacement Drum for DR-500 with gears	Call for Pricing!
--------	--	-------------------

Packaging

BOX460	Box for Brother TN-560 Toner Cartridge	Call for Pricing!
SS460	Yellow Plastic Mag Cover (contains Kevlar)	10/pk
CLIP460	Retaining Clip for Developer Roller	10/pk

Instructions

DOC0273	Toner Cartridge Recycling Instructions for Brother 1650 (TN560)	Free with Order!
DOC0274	Drum Unit Recycling Instructions for Brother 1650 (DR500)	

Cartridges

C560T	Compatible Brother 1650 Cartridge	Call for Pricing!
CM560T	Compatible MICR Brother TN-560 Cartridge	
CDR500	Compatible Brother DR-500 Cart. w/new Drum (no exchange)	

Brother HL-2040 (TN-350/2000)



2 Cartridge System

Laser Printing Engine Supplies

Engine used in Brother HL-2040, and many Brother MFC Fax Machines. See our Cross Reference Guide for more info.



Before starting these toner and/or drum cartridges, it is CRITICAL that the instructions be read. Failure to do so will result in cartridge malfunction.

Toner

350	Brother TN350/2000 Toner	10/pk	Call for Information!
RG350	Reset Gear for TN-350/2000		

Instructions

DOC0361	Toner Cartridge Recycling Instructions for Brother 2040 (TN350)	Free with Order!
---------	---	------------------

Brother HL-5150 (TN-570/3060)



2 Cartridge System

Laser Printing Engine Supplies

Engine used in Brother HL-5150, and many Brother MFC Fax Machines. See our Cross Reference Guide for more info.



Before starting these toner and/or drum cartridges, it is CRITICAL that the instructions be read. Failure to do so will result in cartridge malfunction.

Toner Cartridge Recharging Supplies (TN-540, TN-570)

540	Brother TN540 Toner 140g **25 per case**	Call for Pricing!
570	Brother TN570 Toner 200g **25 per case**	
D5150GH	HanP Replacement Drum for DR510 w/gears	

Instructions

DOC0347	Toner Cartridge Recycling Instructions for Brother 5150 (TN570)	Free with Order!
DOC0348	Drum Unit Recycling Instructions for Brother 5150 (DR510)	

Cartridges

C570T	Brother TN-570 Compatible Cartridge	Call for Pricing!
-------	-------------------------------------	-------------------



Part#

Description

Ship Qty

Brother HL-6050 (TN-670/4100)

Laser Printing Engine Supplies



2 Cartridge System

Engine used in Brother HL-6050, and many Brother MFC Fax Machines. See our Cross Reference Guide for more info.



Before starting these toner and/or drum cartridges, it is CRITICAL that the instructions be read. Failure to do so will result in cartridge malfunction.

Toner

670 Brother TN-670 Toner, 220g ***25 per case*** *Call for Pricing!*

Instructions

DOC0349 Toner Cartridge Recycling Instructions for Brother 6050 (TN670) *Free with Order!*

DOC0350 Drum Unit Recycling Instructions for Brother 6050 (DR600)

Brother HL-7050 (TN-700/5500)

Laser Printing Engine Supplies



2 Cartridge System

Engine used in Brother HL-7050, and many Brother MFC Fax Machines. See our Cross Reference Guide for more info.



Before starting these toner and/or drum cartridges, it is CRITICAL that the instructions be read. Failure to do so will result in cartridge malfunction.

Toner

7050 Brother TN-700 Toner, 345g ***25 per case*** *Call for Pricing!*

FUSE4420 Reset Fuse for Brother TN-700

Instructions

DOC0325 Toner Cartridge Recycling Instructions for Brother 7050 (TN700) *Free with Order!*

DOC0326 Drum Unit Recycling Instructions for Brother 7050 (DR700)

Canon FX-1

OEM# H11-6221 (See also Canon LBP-LX)



1 Cartridge System



The FX1 cartridge is for use in fax machines only. LX laser printer cartridges cannot be used in these machines, but this cartridge CAN be tested in an LX printer.

Toner

2009 **Velvetone** LX Toner, 225g ***25 per case*** *Call for Pricing!*

Drums and Rollers

DLXGH Hanp LX Drum w/gears *Call for Pricing!*

DLXGF Fuji LX Drum w/gears

PCRLX New LX/PX Primary Charge Roller 10/ea.

MRS LX New Magnetic Roller Sleeve, Darkprint 10/ea.

Blades, Seals, Parts

WBLX Wiper Blade 10/ea. *Call for Pricing!*

Cartridge must be cut open to replace

DBLX Doctor Blade ***Change with new MRS*** 10/ea.

SSLXOG Gold 3M Adhesive Sealing Strip 10/pk

DCLX Drum Shutter Cover

PINL Long Pins 50/pk

Instructions

DOC0120 Toner Cartridge Disassembly Instructions for Canon FX1 *Free with Order!*

Cartridges

CFX1 Compatible Canon FX1 Cartridge *Call for Pricing!*



Part#

Description

Ship Qty

Canon FX-2

OEM# H11-6321 (See also Canon LBP-PX)



1 Cartridge System

Engine used in the Canon Laser Class 5000, 5500

TECH TIP

The FX2 cartridge is for use in fax machines only. PX laser printer cartridges cannot be used in these machines. The FX2 cartridge CAN be tested in a PX laser printer, but it is a very tight fit. The cartridge must be wiggled in and out.

Toner

2004	Velvetone PX/4L Toner, 160g **25 per case**	Call for Pricing!
5852	Pro-Toner , Hi Performance 180gm **25 per case**	
1175	SUMMIT Toner, Black, 160g **25 per case**	

Drums and Rollers

DPXGH	HanP PX Drum w/gears	Call for Pricing!
PCRLX	New PX/LX Primary Charge Roller	10/ea.
MRS PXG	New PX Magnetic Roller Sleeve	10/ea.

Blades, Seals, Parts

WBPXK	Wiper Blade **Replace when changing Drum**	10/ea.	Call for Pricing!
DBPXK	Doctor Blade **Change with new MRS**	10/ea.	
SSPXOG	Gold 3M Adhesive Sealing Strip	10/pk	
DCPX	Drum Shutter Cover		
PLUGPX	Toner Hopper Plug	50/pk	
CLIPPX	Drum Cover Mounting Clip	100/pk	

Instructions

DOC0207	Cartridge Disassembly Instructions	Free with Order!
---------	------------------------------------	------------------

Cartridges

CFX2	Compatible Canon Fax FX2 Cartridge	Call for Pricing!
------	------------------------------------	-------------------

Canon FX-3

OEM# H11-6381 (See also Canon LBP-AX)



1 Cartridge System

Engine used in the Canon Laser Class 4000.

TECH TIP

The FX3 cartridge is for use in fax machines only. AX laser printer cartridges cannot be used in these machines. The FX3 cartridge CAN be tested in an AX laser printer.

Toner

2048	Velvetone AX/HP5L, 140g **25 per case**	Call for Pricing!
5783	Pro-Toner , Hi Performance 140gm **25 per case**	
1119	SUMMIT Toner, Black, 140g **25 per case**	

Drums and Rollers

DAXGH	HanP AX Drum w/gears	Call for Pricing!
DAXGF	Fuji AX Drum w/gears	
DAXGV	Velvetone AX Drum w/gears	
PCRAXS	Soft Primary Charge Roller (AX/1100/1200/1300)	10/ea.
PCR1100S	Soft Primary Charge Roller (AX/1100/1200/1300)	10/ea.
PCRVX	Hard Primary Charge Roller (AX/1100/1200/1300)	10/ea.
MRSAXG	Black Mag Roller Sleeve (AX/1100/1200/1300)	10/ea.

Blades, Seals, Parts

WBAXK	Wiper Blade **Replace when changing Drum**	10/ea.	Call for Pricing!
DBAXK	Doctor Blade **Change with new MRS**	10/ea.	
SSAXOG	Gold 3M Adhesive Sealing Strip	10/pk	
RBAX	Recovery Blade	25/pk	
ECVX	Plastic MRS End Cap VX/AX	10/pk	
MLAX	Mag Roll Mounting Lug	10/pk	
PINS	Easy Pull Pin, Small	50/pk	



Part#

Description

Ship Qty

Canon FX-3 *continued*

Instructions

DOC0191 Cartridge Recycling Instructions *Free with Order!*

Cartridges

CFX3 Compatible Canon Fax FX3 Cartridge *Call for Pricing!*

Canon FX-4



OEM# H11-6401 (See also Canon LBP-VX)

1 Cartridge System



The FX4 cartridge is for use in fax machines only. VX laser printer cartridges cannot be used in these machines.
The FX4 cartridge CAN be tested in a VX laser printer. The Drum Clip must be removed first. *Don't forget to reinstall it!*

Toner

2047 **Velvetone** VX/HP5P, 220g ***25 per case*** *Call for Pricing!*
 5876 **Pro-Toner, Hi Performance, 250gm** ***25 per case***
 1192 **SUMMIT** Toner, Black, 220g ***25 per case***

Drums and Rollers

DVXGH HanP VX/FX4 Drum w/gears *Call for Pricing!*
 PCRAXS **Soft** Primary Charge Roller (VX/1100/1200/1300) 10/ea.
 PCR1100S **Soft** Primary Charge Roller (VX/1100/1200/1300) 10/ea.
 PCRVX **Hard** Primary Charge Roller (VX/1100/1200/1300) 10/ea.
 MRSVXG New VX Mag Roller Sleeve 10/ea.

Blades, Seals, Parts

WBVXK Wiper Blade ***Replace when changing Drum*** 10/ea. *Call for Pricing!*
 DBVXK Doctor Blade ***Change with new MRS*** 10/ea.
 SSPXOG Gold 3M Adhesive Sealing Strip 10/pk
 CLIPFX4 Shutter Clip 10/pk
 ECVX Plastic MRS End Cap VX&AX 10/pk

Instructions

DOC0244 Cartridge Disassembly Instructions *Free with Order!*

Cartridges

CFX4 Compatible Canon Fax FX4 Cartridge *Call for Pricing!*

Canon FX-V



OEM# H11-6271

1 Cartridge System

Engine used in the Canon Laser Class 8000

Toner

6245 FXV/KX Toner, Black, 340g ***25 per case*** *Call for Pricing!*

Blades, Seals, Parts

WBFXV Wiper Blade ***Replace when changing Drum*** *Call for Pricing!*
 DBFXV Doctor Blade ***Change with new MRS***
 SSFXV OEM Style Sealing Strip 10/pk
 PINS Easy Pull Pin, Small 50/pk

Instructions

DOC0185 Cartridge Disassembly Instructions *Free with Order!*

Cartridges

CFXV Compatible Canon Fax FX-V Cartridge *Call for Pricing!*



Part#

Description

Ship Qty

Canon FX-6

OEM# H11-6431 (See also HP-4000)



1 Cartridge System

Engine Used in Canon Laser Class 3170, 3175

Toner

1496	Velvetone LJ4000 Toner, 300gm **25 per case**	Call for Pricing!
1610	Velvetone LJ4000/5000, 500g **25 per case**	
5640	Pro-Toner , Hi Performance 500gm **25 per case**	
4000	SUMMIT Toner, 500g **25 per case**	
1610B	Velvetone LJ4000/5000 Bag Toner, 10kg	
5640B	Pro-Toner LJ4000/5000 Bag Toner, 10kg	

Drums and Rollers

D4000WGV	Velvetone Drum w/gears, Weighted	Call for Pricing!
D4000GH	HanP HP-4000 Drum w/gears, Weighted	
PCR4000S	Soft Primary Charge Roller-HP4000/2100	10/ea.
PCR4100S	Soft Primary Charge Roller-HP4000/2100	10/ea.
MRS4000G	Mag Roller Sleeve for HP2100/4000/4100	10/ea.

Blades, Seals, Parts

WB4000K	Wiper Blade **Replace each Cycle**	10/ea.	Call for Pricing!
DB4000K	Doctor Blade **Change with New MRS**	10/ea.	
ST1	Seal Tab, Black	10/pk	
SS4000	Split Hopper Seal, HP 4000	10/pk	
CLIP165	Split Hopper, 165mm Clip Use 2/Cartridge	50/pk	
CLIP4	Split Hopper, 4mm Clip Use 6/Cartridge	500/pk	
CLIP242P	Plastic Hopper Rail 242mm	200/pk	
CLIP242M	242mm Metal Rails	100/pk	
SSFM	Split Hopper Side Foam Seal Use 2/Cartridge	10/pk	
ARM4000	Drum Shutter Arm	10/pk	
PIN4000	Universal Pin for HP-4000	50/pk	
MST4000	Mag Stabilizer for HP-4000 Black	10/pk	
MST4000W	Mag Stabilizer for HP-4000 White	10/pk	
EC4000	Mag Roller Bushing Set for HP-4000	10/pk	
ML4000L	Left Clip for HP-4000	10/pk	
ML4000R	Right Clip for HP-4000	10/pk	
PLUG4000	Toner Hopper Cap for HP-4000	100/pk	
HOP27XFX6	27X to FX6/2100 Conversion Hopper		

Instructions

DOC0236	Cartridge Disassembly Instructions	Free with Order!
---------	------------------------------------	------------------

Cartridges

CFX6	Canon FX6 High Yield Compatible Cartridge	Call for Pricing!
------	---	-------------------

Canon FX-7

(See also HP-2100)



1 Cartridge System

Engine Used in Laser Class 700 Series

Toner

1634	Velvetone LJ2100 Toner, 265g **25 per case**	Call for Pricing!
5621	Pro-Toner , Hi Performance 260gm **25 per case**	
2121	SUMMIT Toner, 225g **25 per case**	

Drums and Rollers

D2100WGV	Velvetone HP-2100 w/gears, Weighted	Call for Pricing!
D2100GH	HanP HP-2100 Drum w/gears	
PCR4000S	Soft Primary Charge Roller-HP4000/2100	10/ea.



Part#

Description

Ship Qty

Canon FX-7 *continued*

Rollers

PCR4100S	Soft Primary Charge Roller-HP4000/2100	10/ea.	<i>Call for Pricing!</i>
MRS4000G	Mag Roller Sleeve for HP2100/4000/4100	10/ea.	

Blades, Seals, Parts

WB2100K	Wiper Blade **Replace each Cycle**	10/ea.	<i>Call for Pricing!</i>
DB4000K	Doctor Blade **Change with New MRS**	10/ea.	
SS4000	Split Hopper Seal	10/pk	
SSFM	Split Hopper Side Foam Seal <i>Use 2/Cartridge</i>	10/pk	
TAB2100	Replacement Cartridge Activation Fin	10/pk	
CLIP165	Split Hopper, 165mm Clip <i>Use 2/Cartridge</i>	50/pk	
CLIP4	Split Hopper, 4mm Clip <i>Use 6/Cartridge</i>	500/pk	
CLIP242P	Plastic Hopper Rail 242mm	200/pk	
CLIP242M	242mm Metal Rails	100/pk	
HOP2100	Toner Hopper, 500g		
PIN2100	Cartridge Pin	50/pk	
PLUG2100	Toner Hopper Plug	100/pk	

Instructions

DOC0252	Cartridge Disassembly Instructions		<i>Free with Order!</i>
---------	------------------------------------	--	-------------------------

Canon FX-8

(See also HP-1200)



1 Cartridge System

Engine Used in laserClass 510 Series

Toner

2071	Velvetone HP-1200 Toner, 145g **25 per case**		<i>Call for Pricing!</i>
2064	Velvetone HP-1200 Toner, 190g **25 per case**		
1213	Pro-Toner HP-1200/1300, 150gm **25 per case**		
5712	Pro-Toner HP-1200, 190gm **25 per case**		
2064B	Velvetone HP-1200 Bag Toner, 10kg		
5912B	Pro-Toner HP-1200 Bag Toner, 10kg		

Drums & Rollers

D1212WGV	Velvetone Drum for HP-1150/1200/1300, Weighted		<i>Call for Pricing!</i>
D1212GH	HanP Drum for HP-1200		
PCRAXS	Soft Primary Charge Roller, AX/1100/1200/1300	10/ea.	
PCR1100S	Soft Primary Charge Roller, AX/1100/1200/1300	10/ea.	
MRS1200G	Black Mag Roller Sleeve, 1200/1300	10/ea.	

Blades, Seals and Parts

SS1212	Gold Adhesive Seal Strip for HP-1200	10/pk	<i>Call for Pricing!</i>
WB1320K	Wiper Blade for the HP-1200	10/ea.	
DB1212K	Doctor Blade for the HP-1200 **Change with new MRS**	10/ea.	

Instructions

DOC0275	Disassembly Instructions for HP-1200		<i>Free with Order!</i>
---------	--------------------------------------	--	-------------------------

Canon LBP-AX

HP OEM# C3906A



1 Cartridge System

Engine used in HP LaserJet 5L, 6L, 3100, 3150.



The Canon FX3 also uses the supplies below.

The FX3 cartridge can be tested in a AX printer, however, the AX cartridge will not work in the FX3 fax machine.

Toner

2048	Velvetone AX/HP5L, 140g **25 per case**		<i>Call for Pricing!</i>
------	---	--	--------------------------



Part#

Description

Ship Qty

Canon LBP-AX continued

Toner

5783	Pro-Toner , Hi Performance 140gm **25 per case**	Call for Pricing!
1119	SUMMIT Toner, Black, 140g **25 per case**	
5905B	Pro-Toner , HP1100/AX Per-fil bag 10Kg	
9460M	MICR Toner, HP 1100, AX 140g **Use for Printing Checks**	

Drums and Rollers

DAXGH	HanP AX Drum w/gears	Call for Pricing!
DAXGF	Fuji AX Drum w/gears	
DAXGV	Velvetone AX Drum w/gears	
MRSAXG	Black Mag Roller Sleeve, (AX/1100/1200/1300)	10/ea.
PCRAXS	Soft Primary Charge Roller (AX/1100/1200/1300)	10/ea.
PCR1100S	Soft Primary Charge Roller (AX/1100/1200/1300)	10/ea.
PCRVX	Hard Primary Charge Roller (AX/1100/1200/1300)	10/ea.

Blades, Seals, Parts

WBAXK	Wiper Blade **Replace each Cycle**	10/ea.	Call for Pricing!
DBAXK	Doctor Blade **Change with new MRS**	5/ea.	
SSAXOG	Gold 3M Adhesive Sealing Strip	10/pk	
RBAX	Recovery Blade	25/pk	
MLAX	Mag Roll Mounting Lug	10/pk	
ECVX	Plastic MRS End Cap AX&VX	10/pk	
PINS	Easy Pull Pin, Small	50/pk	
MRHAX	Mag Sleeve Hub - AX	10/ea.	

Instructions

DOC0191	Cartridge Recycling Instructions	Free with Order!
---------	----------------------------------	------------------

Cartridges

C06A	HP 5L/6L Compatible Cartridge	Call for Pricing!
CM06A	HP 5L/6L MICR Cartridge	

Canon LBP-BX, BXII

HP OEM# C3900A



1 Cartridge System

Engine used in HP LaserJet 4V, 4MV, QMS 860 Hammerhead, Xante Accel-a-Write 8100, CalComp CCL-600



BXII is a printer engine designation only. It has no bearing on cartridge supplies, it concerns printer parts only.

Toner

1123	SUMMIT Toner, Black, 400g **25 per case**	Call for Pricing!
------	--	-------------------

Drums and Rollers

DBXGH	HanP BX Drum w/gears	Call for Pricing!
PCRBX	New Primary Charge Roller	10/ea.
MRSBX	New Magnetic Roller Sleeve	10/ea.

Blades, Seals, Parts

WBBX	Wiper Blade **Replace when changing Drum**	10/ea.	Call for Pricing!
RBBX	Recovery Blade**Mounts opposite the Wiper Blade**	25/pk	
DBBX	Doctor Blade **Change with new MRS**	10/ea.	
SSBXOG	Gold 3M Adhesive Sealing Strip	10/pk	
DCBX	Drum Shutter Cover		
PINL	Long Pins	50/pk	

Instructions

DOC0204	Engine Disassembly Instructions	Free with Order!
---------	---------------------------------	------------------

Cartridges

C00A	HP 4V Compatible Cartridge	Call for Pricing!
CM00A	MICR HP 4V Cartridge	



Part#

Description

Ship Qty

Canon LBP-CX

OEM# 92285A



1 Cartridge System

Engine used in HP LaserJet, LaserJet+, LaserJet 500, LaserJet 500+, Apple LaserWriter, LaserWriter Plus, LaserWriter NT, QMS Big Kiss, Big Kiss II, Packard Bell PB-8300, PB-8300DP, etc.

Toner

1138 **SUMMIT** Toner, Black, 200g ***25 per case*** *Call for Pricing!*

Blades, Seals, Parts

WBCX Wiper Blade ***Replace each cycle*** *Call for Pricing!*

TECH TIP

⚠ DON'T FORGET - Never Re-use the OEM wiper blade. It will not last a full cycle.

Blades, Seals, Parts

RBCX Recovery Blade ***Mounts opposite the Wiper Blade*** 25/pk *Call for Pricing!*

FWCX Felt Wand 5/pk

SSCX Sealing Strip ***For hand delivery only*** 10/pk

IT1 CX Seal Insertion Tool

ST1 Seal Tab, Black 100/pk

DCFSX Universal Drum Shutter Felt 10/ea.

Protects drum from shutter damage

PLUGPC Toner Hopper Cap For late model CX Carts. 0.98" diameter. 100/pk

Instructions

DOC0140 Toner Cartridge Disassembly Instructions *Free with Order!*

Canon LBP-EX, EXII

HP OEM# 92298A



1 Cartridge System

Engine used in HPLaserJet 4, 4 Plus, 5, HP toner cartridge #92298A--(6.8k), 92298X--(8.8k), or C3973A--(4k) and Apple LaserWriter Pro 600/630, toner cartridge #M2473 G/A, (cartridge #M6018G/A discontinued).

TECH TIP

HP now supplies 3 cartridges for the HP 4 and 5. The 92298A rated at 6,800 pages, the 92298X rated at 8,800 pages, and the C3973A rated at 4,000 pages. The only difference is the amount of toner inside.

TECH TIP

EXII- is a printer engine designation only. It has no bearing on cartridge supplies; it concerns printer parts only.

Toner

2001 **Velvetone** LJ4 EX/HP, 340g ***25 per case*** *Call for Pricing!*

2002 **Velvetone** LJ4 EX/HP, 380g ***25 per case***

2041 **Velvetone** HP LaserJet4, 500g ***25 per case***

5800 **Pro-Toner** Hi Performance 360gm ***25 per case***

1147 **SUMMIT** Toner, Black, 340g ***25 per case***

5922B **Pro-Toner**, Per-fil bag 10Kg

2001B **Velvetone** LJ4 EX/HP Bag Toner, 10Kg

9750M MICR Toner, 340g ***use to print checks***

Drums and Rollers

DEXGH HanP EX Drum w/gears *Call for Pricing!*

DEXWGV Velvetone Weighted Drum w/gears

PCREX New Primary Charge Roller 10/ea.

MRSEXGC Black Magnetic Roller Sleeve w/contact 10/ea.

Blades, Seals, Parts

WBEXK Wiper Blade ***Replace each cycle*** 10/ea. *Call for Pricing!*

DBEXK Doctor Blade ***Change with new MRS*** 10/ea.

SSEXF Split Hopper Seal 10/pk

SSEX Plastic Sealing Strip ***For hand delivery only*** 10/pk

ST1 Seal Tab, Black 100/pk

CLIP4 Split Hopper, 4mm Clip *Use 6/Cartridge* 500/pk

CLIP165 Split Hopper, 165mm Clip *Use 2/Cartridge* 50/pk



Part#

Description

Ship Qty

Canon LBP-EX, EXII continued

Seals & Parts

CLIP242P	Plastic Hopper Rail 242mm	200/pk	Call for Pricing!
CLIP242M	242mm Metal Rails	100/pk	
SSFM	Split Hopper Side Foam Seal Use 2/Cartridge	10/pk	
SSEXG	Split Hopper Seal Gasket	10/pk	
	<i>Use when end foam is damaged</i>		
HOPEX	Jumbo Hopper Holds up to 600g!		
	<i>**Installation requires splitting the hopper**</i>		
TECH TIP	☞ Converts ANY OEM EX cartridge to a high capacity cartridge.		
DCFSX	Universal Drum Shutter Felt	10/pk	
	<i>**Protects drum from shutter damage**</i>		
ECEX	Magnetic Roller Sleeve End Caps	10/pk	
PLUGWX	WX, SX, NX, EX Toner Hopper Cap	100/pk	

Instructions

DOC0220	HP4 Disassembly Instructions		Free with Order!
---------	------------------------------	--	------------------

Cartridges

C98A	HP 4, 4+, 5 Compatible Cartridge		Call for Pricing!
CM98A	MICR HP 4, 4+, 5, Cartridge		

Canon LBP-JX

Xante OEM# TON012



1 Cartridge System

Engine used in Xante Accel-a-writer 8300.

Toner

9715	Toner, Black, 500g		Call for Pricing!
------	--------------------	--	-------------------

Drums and Blades

DJXGH	HanP JX Drum w/ gears		Call for Pricing!
DBJX	Doctor Blade <i>**Change with new MRS**</i>		

Seals and Rollers

PCRWX	New Primary Charge Roller		Call for Pricing!
SSJX	Sealing Strip	10/pk	

Canon LBP-KX

Fax Engine Supplies



1 Cartridge System

TECH TIP

Canon LBP-KX and Canon FXV cartridges use the same supplies, but the cartridges are not interchangeable.

Toner

6245	FXV/KX Toner, Black, 340g <i>**25 per case**</i>		Call for Pricing!
------	--	--	-------------------

Blades, Seals, Parts

WBFXV	Wiper Blade <i>**Replace when changing Drum**</i>		Call for Pricing!
DBFXV	Doctor Blade <i>**Change with new MRS**</i>		
SSFXV	OEM Style Sealing Strip	10/pk	Call for Pricing!
PINS	Easy Pull Pin, Small	50/pk	

Instructions

DOC0185	Cartridge Disassembly Instructions		Free with Order!
---------	------------------------------------	--	------------------



Part#

Description

Ship Qty

Canon LBP-LX

HP OEM# 92275A



1 Cartridge System

Engine for HP IIP, IIP Plus, IIP, Lasermaster Lasermax 400, Maxwriter 400, etc.

Call for Pricing!

TECH TIP

The Canon FX1 cartridge uses the supplies below, but an LX printer cartridge cannot be used in place of the FX1 cartridge. However, the FX1 toner cartridge can be tested in the LX printer.

Toner

2009	Velvetone LX Toner, 225g <i>**25 per case**</i>	Call for Pricing!
9720M	MICR Toner, 200g <i>**Use for Printing Checks**</i>	

Drums and Rollers

DLXGH	HanP LX Drum w/gears	Call for Pricing!
DLXGF	Fuji LX Drum w/gears	
PCRLX	New LX/PX Primary Charge Roller	10/ea.
MRS LX	New Magnetic Roller Sleeve	10/ea.

Blades, Seals, Parts

WBLX	Wiper Blade	10/ea.	Call for Pricing!
	<i>**Cartridge must be cut open to replace**</i>		
DBLX	Doctor Blade <i>**Change with new MRS**</i>	10/ea.	
SSLXOG	Gold 3M Adhesive Sealing Strip	10/pk	
DCLX	Drum Shutter Cover		
DCFSX	Universal Drum Shutter Felt	10/ea.	
	<i>**Protects drum from shutter damage**</i>		
PINL	Long pins	50/pk	

Instructions

DOC0120	Toner Cartridge Disassembly Instructions	Free with Order!
---------	--	------------------

Cartridges

C75P	Pro - HP IIP, IIP Compatible Cartridge
CM75A	MICR HP IIP/IIIP, Cartridge

Canon LBP-NX, NXII

HP OEM# 92291A



1 Cartridge System

Engine used in HP LaserJet IIIsi & 4si (toner cartridge #92291A), QMS PS-1700, Canon P 170.

TECH TIP

We do not recommend recharging the NX cartridge with a grey or white colored original OEM PCR, as it will normally fail during the first cycle.

TECH TIP

NXII is a printer engine designation only. It has no bearing on cartridge supplies; it concerns printer parts only.

Toner

2000	Velvetone IIIIsi NX, 500g <i>**25 per case**</i>	Call for Pricing!
5835M	MICR Toner for HP-3si/4si , 500g <i>Use for Printing Checks</i>	

Drums and Rollers

DNXGF	Fuji NX Drum w/gears	Call for Pricing!
MRSNXG	New NX/SX Magnetic Roller Sleeve	10/ea.

Blades, Seals, Parts

WBNX	Wiper Blade <i>**Replace each cycle**</i>	10/ea.	Call for Pricing!
RBNX	Recovery Blade <i>**Mounts opposite the Wiper Blade**</i>	25/pk	
DBNX	Doctor Blade <i>**Change with new MRS**</i>	10/ea.	
SSNXF	Split Hopper Seal	10/pk	
SSNX	Plastic Seal for HP-IIIIsi <i>**For hand delivery only**</i>	10/pk	
ST1	Seal Tab, Black	100/pk	
CLIP4	Split Hopper, 4mm Clip <i>Use 6/Cartridge</i>	500/pk	
CLIP165	Split Hopper, 165mm Clip <i>Use 2/Cartridge</i>	50/pk	



Part#

Description

Ship Qty

Canon LBP-NX, NXII *continued*

Seals & Parts

SSFM	Split Hopper Side Foam Seal <i>Use 2/Cartridge</i>	10/pk	<i>Call for Pricing!</i>
DCFSX	Universal Drum Shutter Felt <i>**Protects drum from shutter damage**</i>	10/ea.	
PINSX100	Replacement Pins	100/pk	
PLUGWX	WX, SX, NX, EX Toner Hopper Cap	100/pk	

Instructions

DOC0190	Cartridge Disassembly Instructions		<i>Free with Order!</i>
---------	------------------------------------	--	-------------------------

Cartridges

C91A	HP III Si, 4Si Compatible Cartridge		<i>Call for Pricing!</i>
CM91A	MICR HP 3Si/4Si Cartridge		

Canon LBP-PX, PXII

HP OEM# 92274A



1 Cartridge System

Engine used in the HP LaserJet 4L, 4P Laser Printer.

TECH TIP

PXII is a printer engine designation only. It has no bearing on cartridge supplies; it concerns printer parts only.

TECH TIP

The FX2 cartridge is for use in fax machines only. PX laser printer cartridges cannot be used in these machines.

The FX2 cartridges CAN be tested in a PX laser printer, but it is a very tight fit. The cartridge must be wiggled in and out.

Toner

2004	Velvetone PX/4L Toner, 160g <i>**25 per case**</i>		<i>Call for Pricing!</i>
5852	Pro-Toner, Hi Performance 180gm <i>**25 per case**</i>		
1175	SUMMIT Toner, Black, 160g <i>**25 per case**</i>		
2004B	Velvetone PX/4L Toner, Per-fil bag 10 Kg		
5964B	Pro-Toner , Per-fil bag 10Kg		
9760M	MICR Toner, 160g <i>**Use for Printing Checks**</i>		

Drums and Rollers

DPXGH	HanP PX Drum w/gears		<i>Call for Pricing!</i>
PCRLX	New PX/LX Primary Charge Roller	10/ea.	
MRSPXG	New PX Magnetic Roller Sleeve	10/ea.	

Blades, Seals, Parts

WBPXK	Wiper Blade <i>**Replace when changing Drum**</i>	10/ea.	<i>Call for Pricing!</i>
DBPXK	Doctor Blade <i>**Change with new MRS**</i>	10/ea.	
SSPXOG	Gold 3M Adhesive Sealing Strip	10/pk	

TECH TIP

When recycling this cartridge, we recommend always using a sealing strip. The supply chamber is completely open on one side, and the seal will close it off, allowing you to easily fill it with toner.

CLIPPX	Drum Cover Mounting Clip	50/pk	
DCPX	Drum Shutter Cover		
PLUGPX	Toner Hopper Cap	100/pk	

Instructions

DOC0207	Cartridge Disassembly Instructions		<i>Free with Order!</i>
---------	------------------------------------	--	-------------------------

Cartridges

C74A	HP 4L/4P Compatible Cartridge		<i>Call for Pricing!</i>
CM74A	MICR HP 4L/4P Cartridge		



Part#

Description

Ship Qty

Canon LBP-SX

HP OEM# 92295A



1 Cartridge System

Engine used in HP LaserJet II, IID, III, IIID, Apple LaserWriter II NT, LBP 8II, LBP 8III, QMS Kiss Plus, Smartwriter 20 plus.

Toner

5861	Pro-Toner , Hi Performance 275gm **25 per case**	Call for Pricing!
5961B	Pro-Toner , Per-fil Bag, 10kg	
8056M	MICR Toner, 250g **Use for Printing Checks**	

Drums and Rollers

DSXGF	Fuji SX Drum w/gears	Call for Pricing!
MRSSX	New SX/NX Magnetic Roller Sleeve	10/ea.

Blades, Seals, Parts

WBSX	Wiper Blade **Replace when changing Drum**	10/ea.	Call for Pricing!
RBSX	Recovery Blade **Mounts opposite the Wiper Blade**	25/pk	
FWSX	Felt Wand	5/pk	
SSSXF	Split Hopper Seal	10/pk	
SSSXHS	Plastic Sealing Strip **For hand delivery only**	10/pk	
SSSXOP	OEM Perimeter Toner Bin Seal **Requires IT2 Insertion Tool**	10/pk	
IT2	SX Seal Insertion Tool		
ST1	Seal Tab, Black	10/pk	
CLIP4	Split Hopper, 4mm Clip Use 6/Cartridge	500/pk	
CLIP165	Split Hopper, 165mm Clip Use 2/Cartridge	50/pk	
SSFM	Split Hopper Side Foam Seal Use 2/Cartridge	10/pk	
SSSXG	4 Sided Gasket **Use when end foam is damaged**	10/pk	
PCWSX	Primary Corona Wire Retro Fit Kit	5/pk	
DCFSX	Universal Drum Shutter Felt **Protects drum from shutter damage**	10/ea.	
DCLSSX	Drum Cover Light Seal		
MLDSX	Mag Roller Mounting Lug, Drive Side		
MLESX	Mag Roller Mounting Lug, Electrical Side		
PINSX100	Replacement Pins	100/pk	
TECH TIP	⚡ DON'T FORGET THESE HANDY PINS		
PLUGWX	WX, SX, NX, EX Toner Hopper Cap	100/pk	
TABSX	Drum Sensitivity Tabs **Mount to outside of shell**	100/pk	

Instructions

SGII	Intravia's Service Guide - HP II	Call for Pricing!
DOC0150	EPS Cartridge Disassembly Instructions	Free with Order!

Cartridges

C95A	HP II/III Compatible Cartridge	Call for Pricing!
CM95A	MICR HP II, III Cartridge	

Canon LBP-VX

HP OEM# C3903A



1 Cartridge System

Engine used in HP LaserJet 5P, 6P.



The Canon FX4 uses the supplies below. The FX4 can be tested in an HP5/6P printer by removing the extra black plastic tab on the Drum Cover - make sure you put this back when finished.

Toner

2047	Velvetone VX/HP5P, 220g **25 per case**	Call for Pricing!
------	--	-------------------



Part#

Description

Ship Qty

Canon LBP-VX *continued*

Toner

5876	Pro-Toner , Hi Performance 235gm **25 per case**		Call for Pricing!
1192	SUMMIT Toner, Black, 220g **25 per case**		
5981B	Pro-Toner , Per-fil bag 10Kg		
9780M	MICR Toner for HP5P, 225g		

Drums and Rollers

DVXGH	HanP VX Drum w/gears		Call for Pricing!
PCRAXS	Soft Primary Charge Roller (VX/1100/1200/1300)	10/ea.	
PCR1100S	Soft Primary Charge Roller (VX/1100/1200/1300)	10/ea.	
PCRVX	Hard Primary Charge Roller (VX/1100/1200/1300)	10/ea.	
MRSVXG	New VX Magnetic Roller Sleeve	10/ea.	

Blades, Seals, Parts

WBVXK	Wiper Blade **Replace when changing Drum**	10/ea.	Call for Pricing!
DBVXK	Doctor Blade **Change with new MRS**	10/ea.	
SSPXOG	Gold 3M Adhesive Sealing Strip	10/pk	
ECVX	Plastic MRS End Cap VX/AX	10/pk	

Instructions

DOC0244	Cartridge Disassembly Instructions		Free with Order!
---------	------------------------------------	--	------------------

Cartridges

C03A	HP 5P,6P Compatible Cartridge		Call for Pricing!
CM03A	MICR HP 5P, 6P Cartridge		

Canon LBP-WX

HP OEM# C3909A



1 Cartridge System

Engine used in HP LaserJet 5si, 5siMX, 8000.

TECH TIP The OEM drum & Magnetic Roller Sleeve may not last through the first recharge.

Toner

1199	SUMMIT Toner, 840gm **20 per case**		Call for Pricing!
2020	Velvetone 5Si/WX Toner, 820g **20 per case**		
5884	Pro-Toner , WX 5si, 950g **20 per case**		
5948B	Pro-Toner , Per-fil Bag, 10kg		
2020B	Velvetone 5Si/WX, Per-fil Bag, 10kg		
9795M	MICR Toner-HP 5si, 850g **Use for Printing Checks**		

Drums and Rollers

DWXGH	HanP WX Drum w/gears		Call for Pricing!
PCRWX	New Primary Charge Roller	10/ea.	
MRS8100G	Black WX/8100 Magnetic Roller Sleeve	10/ea.	

TECH TIP A Mag roller press is required for proper installation

MRPWX	Mag Roller Press WX/8100		**Removes and Installs Metal Hub**
-------	--------------------------	--	------------------------------------

Blades, Seals, Parts

WBWXK	Wiper Blade **Replace each cycle**	10/ea.	Call for Pricing!
DBWXK	Doctor Blade **Change with new MRS**	10/ea.	
RBWX	Recovery Blade **Mounts opposite the Wiper Blade**	25/pk	
MRF5X	Magnetic Roller Felt	50/pk	
SSWXF	Split Hopper Seal	10/pk	



Part#

Description

Ship Qty

Canon LBP-WX *continued*

Blades, Seals, Parts

CLIP32	32mm Split Hopper Clip	100/pk	<i>Call for Pricing!</i>
SSWXG	4 Sided Gasket <i>**Use when end foam is damaged**</i>	10/pk	
RINGWX	Drum Axle Ring	10/pk	
ARMWX	Drum Shutter Arm	10/pk	
ECWX	End Cap	10/pk	
PLUGWX	(WX, SX, NX, EX Toner Hopper Cap	100/pk	
CLIPWX	HP 5si Plastic Cartridge Clip	10/pk	
MLWXL	Magnetic Roller Lug Left Side	10/pk	
MLWXR	Magnetic Roller Lug Right Side	10/pk	
MRBWXW	Air Gap Roller, White		
MRBWXB	Air Gap Roller, Black		
MRFWX	Mag Roller Felt	50/pk	

Instructions

DOC0192	Disassembly Instruction for the WX Cartridge		<i>Free with Order!</i>
---------	--	--	-------------------------

Cartridges

C09A	HP 5Si, 8000 Compatible Cartridge		<i>Call for Pricing!</i>
CM09A	MICR HP 5Si, 8000 Cartridge		

Canon NP-1010

Canon OEM# F41-6601



2 Cartridge System

Engine used in the Canon NP-1010 & NP-1020 copiers

Toner Cartridge Recharging Supplies **Canon# F41-6601-700**

TC1010	Toner Kit, 105g	2/pk	<i>Call for Pricing!</i>
DPC3GA	AEG NP-1010 Drum w/ gears		
WBSX	Wiper Blade <i>**Replace when changing Drum**</i>	10/ea	
FWPC3	Felt Wand	5/pk	

Instructions

DOC0211	OPC Instructions		<i>Free with Order!</i>
---------	------------------	--	-------------------------

Canon NP-1500 (Type D)



1 Cartridge System

Engine used in Canon NP-1500 copiers with the F41-7601-700 (Type D) cartridges.



The Type D (NP 1500) and F-100 (PC-850) cartridges look similar but are not interchangeable. They do, however, use the same toner only.

Toner

1585	Toner, 500g <i>**25 per case**</i>		<i>Call for Pricing!</i>
------	------------------------------------	--	--------------------------

Instructions

DOC0173	Disassembly Instructions		<i>Free with Order!</i>
---------	--------------------------	--	-------------------------

Canon PC-1060 (L-50)

Canon OEM # L-50



1 Cartridge System

Engine Used in PC1060, PC1080F



Convert your 96A carts to a L-50! See TAB2100

Toner

1634	Velvetone LJ2100 Toner, 265g <i>**25 per case**</i>		<i>Call for Pricing!</i>
1634KG	Velvetone LJ2100 Toner, 1Kg		



Part#

Description

Ship Qty

Canon PC-1060 (L-50) continued

Toner

5621	Pro-Toner , Hi Performance 260gm **25 per case**	Call for Pricing!
2121	SUMMIT Toner, 225g **25 per case**	
2100M	MICR Toner, 225g	
1634B	Velvetone , LJ2100 Per-fil bag 10Kg	
5640B	Pro-Toner , 4000/2100 Per-fil bag 10Kg	

Drums and Rollers

D2100GH	HanP HP-2100 Drum with gears	Call for Pricing!
D2100WGV	Velvetone Weighted Drum for HP-2100 w/gears	
MRS4000G	Mag Roller Sleeve for HP2100/4000/4100	10/ea.
PCR4000S	Soft Primary Charge Roller	10/ea
PCR4100S	Soft Primary Charge Roller	10/ea

Blades, Seals, Parts

SSFm	Split Hopper Side Foam Seal Use 2/Cartridge	10/pk	Call for Pricing!
SS4000	Split Hopper Seal	10/pk	
DB4000K	Doctor Blade **Change with new MRS**	10/ea	
WB2100K	Wiper Blade for HP 2100/4500	10/ea	
CLIP242P	Plastic Hopper Rail 242mm	200/pk	
CLIP242M	242mm Metal Rails	100/pk	
CLIP165	Split Hopper, 165mm Clip Use 2/Cartridge	50/pk	
CLIP4	Split Hopper, 4mm Clip Use 6/Cartridge	500/pk	
PLUG2100	Toner Hopper Plug	100/pk	
PIN2100	Cartridge Pin	50/pk	
TAB2100	Replacement Cartridge Activation Fin	10/pk	

Instructions

DOC0293	Disassembly Instructions for PC-1060	Free with Order!
---------	--------------------------------------	------------------

Cartridges

CL50	Canon L50 Compatible Cartridge	Call for Pricing!
------	--------------------------------	-------------------

Canon PC-2000

Canon OEM# F41-2302 (A-20)



1 Cartridge System

Engine used in Canon PC-10/14/20/24/25.

Toner

9170	SUMMIT Toner, Black, 170g **25 per case**	Call for Pricing!
1202	Canon PC 10/25 Toner, 150g	

Blades, Seals, Parts

WBCX	Wiper Blade **Replace each cycle**	Call for Pricing!
RBCX	Recovery Blade **Mounts opposite the Wiper Blade**	25/pk
FWCX	Felt Wand	5/pk
SSCX	Sealing Strip **For hand delivery only**	10/pk
ST1	Seal Tab, Black	100/pk
PLUGPC	Toner Hopper Cap	100/pk

For late model CX/PC Cartridges, 0.98" diameter.

Instructions

MM2	Mini Manual	Call for Pricing!
DOC0140	Toner Cartridge Disassembly Instructions	Free with Order!



Part#

Description

Ship Qty

Canon PC-330 (E40)



1 Cartridge System

Canon OEM# E16-E40

Engine used in Canon PC-310/770 with the E16, E20, E31, E40 cartridges.

TECH TIP

The E-31 cartridge will sometimes be stamped "E-3" rather than "E-31" & the E-16 cartridge sometimes is stamped "E-1" rather than "E-16". E20's are still stamped as E16 and E40's are still stamped as E31.

TECH TIP

The difference between the E16 and the E20 is the way they are rated, The E16 is 1,600 pages at 6% but the E20 is rated at 2,000 pages at 5% coverage with the same amount of toner. It is the same for the E31 and E40.

TECH TIP

Toner

1202	Velvetone HY PC 300/700, 150g **25 per case**	<i>Call for Pricing!</i>
9340	SUMMIT Toner, Black, 170gm, Use in: E31, E40 **25 per case**	
2069	Canon E-40 Toner, 220g **25 per case**	
9330	SUMMIT Toner, Black, 85gm, Use in: E16, E20 **25 per case**	
9340B	SUMMIT Toner, Per-fil Bag, 10kg	

Drums and Rollers

DE40GH	HanP PC-330 OPC Drum w/gears	<i>Call for Pricing!</i>
DPC330GF	Fuji PC-330 Drum w/gears	
PCRLX	New LX/PX Primary Charge Roller	10/ea.

Blades, Seals, Parts

DBE40	Doctor Blade	5/ea.	<i>Call for Pricing!</i>
WBPXK	Wiper Blade **Replace when changing Drum**	10/ea.	
SSPXOG	Gold 3M Adhesive Seal	10/ea.	
MRSE40	Canon E31/E40 Mag Sleeve Kit		

Instructions

DOC0234	Disassembly Instructions	<i>Free with Order!</i>
---------	--------------------------	-------------------------

Cartridges

CE40	Canon PC-330 Series Compatible Cartridge	<i>Call for Pricing!</i>
------	--	--------------------------

Canon PC-850 (F-100)

OEM # F-100 (F41-9921)



1 Cartridge System

Toner

850	SUMMIT Toner, 600gm **20 per case**	<i>Call for Pricing!</i>
-----	--	--------------------------

Blades, Seals, Parts

WB850	Wiper Blade **Replace when changing Drum**	<i>Call for Pricing!</i>
-------	--	--------------------------

Instructions

DOC0172	Disassembly Instructions	<i>Free with Order!</i>
---------	--------------------------	-------------------------

Canon PC-Mini (A-30)

Canon OEM# A15/A30



1 Cartridge System

Engine used in Canon PC-1/2/3/5/6/65/7/8/11/12, etc

Toner

9170	SUMMIT Toner, 170g **25 per case**	<i>Call for Pricing!</i>
1214	Canon PC A-15/30 Toner, 180g	
9340B	SUMMIT Toner, Per-fil Bag, 10kg	

Drums and Rollers

DPC3GA	Fuji PC-Mini Drum w/gears	<i>Call for Pricing!</i>
--------	---------------------------	--------------------------

Blades

WBSX	Wiper Blade **Replace when changing Drum**	10/ea.	<i>Call for Pricing!</i>
------	--	--------	--------------------------



Part#

Description

Ship Qty

Canon PC-Mini (A-30) continued

Blades & Parts

RBPCMINI	Recovery Blade**Mounts opposite the Wiper Blade**	25/pk	Call for Pricing!
FWPC3	Felt Wand	5/pk	
FW820	Felt Wand - Panasonic FP-820	5/pk	
ST1	Seal Tab, Black	100/pk	
SSSXF	Split Hopper Seal	10/pk	
SSSXOP	OEM Perimeter Toner Bin Seal	10/pk	
	<i>**Requires IT2 Insertion Tool**</i>		
IT2	SX Seal Insertion Tool		
SSSXHS	Sealing Strip <i>**For hand delivery only**</i>	10/pk	
CLIP4	Split Hopper, 4mm Clip <i>Use 6/Cartridge</i>	500/pk	
CLIP165	Split Hopper, 165mm Clip <i>Use 2/Cartridge</i>	50/pk	
SSFM	Split Hopper Side Foam Seal <i>Use 2/Cartridge</i>	10/pk	
PCWSX	Primary Corona Wire Retro Fit Kit	5/pk	
	<i>NOTE: Change each cycle. Allows even, consistent copies</i>		
PINSX100	Replacement Pins	100/pk	

Instructions

SGPCMINI	Intravia's PC Book		Call for Pricing!
DOC0210	Toner cartridge disassembly instructions		Free with Order!

Cartridges

CA30	Canon PC 3/5/6/12 Compatible Cartridge		Call for Pricing!
------	--	--	-------------------

Fuji-Xerox P-880

IBM # 90H0748, Apple # M5893G/A



1 Cartridge System

Engine used in IBM Infoprint 20, Apple Laser Writer 8500.

Toner

920	SUMMIT Toner, 650g <i>**25 per case**</i>		Call for Pricing!
-----	--	--	-------------------

Drums and Rollers

D920GH	Infoprint 20 Drum, HanP, w/gears		Call for Pricing!
WB920	Wiper Blade <i>**Replace each cycle**</i>		

Fuji-Xerox XP-4

Epson OEM # S051023



1 Cartridge System

Engine used in the Epson ActionLaser 1100, 1400 series.

Toner

1400	SUMMIT Toner, 160g <i>**25 per case**</i>		Call for Pricing!
------	--	--	-------------------

Instructions

DOC0245	Disassembly Instructions		Free with Order!
---------	--------------------------	--	------------------

Fuji-Xerox XP-5/10

Apple OEM # M1960G/A



1 Cartridge System

Engine used in the Apple LaserWriter Select 300, 310 (Apple# M2029G/A), LaserWriter Select 360 (Apple# M1960G/A) and the Star Micronics LS-5 series.

Toner

510	SUMMIT XP 5/10 Toner, 200g <i>**25 per case**</i>		Call for Pricing!
-----	--	--	-------------------



Part#

Description

Ship Qty

Fuji-Xerox XP-5/10 continued

Toner

2058 **Velvetone** Apple 360/XP 5/10, 200g ***25 per case*** *Call for Pricing!*

Drums and Rollers

D510GH HanP XP 5/10 Drum w/gear *Call for Pricing!*

Blades, Seals, Parts

WB510 Wiper Blade ***Replace each cycle*** *Call for Pricing!*

DB510 Doctor Blade ***Change with new MRS***

SS510 Sealing Strip 10/pk

PINL Long pins 50/pk

Instructions

DOC0231 Disassembly Instructions *Free with Order!*

Cartridges

C510F Panafax UF 745, 755, Compatible Cartridge *Call for Pricing!*

C510L Fuji-Xerox XP5/10 LSR Compatible Cartridge

Fuji-Xerox XP-8/16

DataProducts OEM # 313134-504



1 Cartridge System

Engine used in the DataProducts Typhoon 8/16 series

Toner

816 **SUMMIT** Toner, 310g ***25 per case*** *Call for Pricing!*

Drums and Rollers

D816GH HanP XP 8/16 Drum w/gears *Call for Pricing!*

Fuji-Xerox XP-11

Xerox OEM# 6R281



2 Cartridge System

Engine used in the Xerox 4030, 4030 II

Toner

4030 Toner, 400g ***25 per case*** *Call for Pricing!*

4030M MICR Toner

Drums and Rollers

D4030GH HanP XP-11 Drum w/gears *Call for Pricing!*

Blades, Seals, Parts

SS4030 Sealing Strip 10/pk *Call for Pricing!*

WB4030 Wiper Blade ***Replace each cycle***

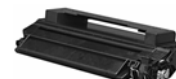
Instructions

DOC0239 OPC Recycling Instructions *Free with Order!*

DOC0216 Toner Cartridge Recharge Instructions

Fuji-Xerox XP-12

Apple OEM # M4683G/A



1 Cartridge System

Engine used in the IBM 4312, Apple 12/640

Toner

2065 **Velvetone** 4312/NEC 1260 Toner, 280g ***25 per case*** *Call for Pricing!*

4312 **SUMMIT** XP-12 Toner, 280g ***25 per case***

4312M MICR Toner, 270g



Part#

Description

Ship Qty

Fuji-Xerox XP-12 continued

Drums

D4312GH HanP XP-12 Drum w/grs *Call for Pricing!*

Blades

WB4312 Wiper Blade ****Replace each cycle**** *Call for Pricing!*

DB4312 Doctor Blade

Instructions

DOC0186 Disassembly Instructions *Free with Order!*



1 Cartridge System

Fuji-Xerox XP-15/20

Engine used in Compaq Pagemarq 15, 20 and Data Products LZR 1560

TECH TIP Do NOT clean the primary corona wire assembly with an ultra-sonic cleaner or compressed air. Clean it only with a Q-Tip and alcohol. An ultra-sonic cleaner or compressed air will remove the special black coating from the wire chamber.

TECH TIP The NEC NEFAX770 uses the same supplies but the cartridges are not interchangeable.

* For best results, replace the corona wire and Varistor each cycle.

Toner

1525 **SUMMIT** Toner 750g ****20 per case**** *Call for Pricing!*

Drums

D1520GH HanP Drum for XP15/20 *No gear* *Call for Pricing!*

Blades, Seals, Parts

WB1520 Wiper Blade ****Replace each cycle**** *Call for Pricing!*

SS1520 Sealing Strip 10/pk

PCW1520 Primary Corona Wire ****Change each cycle**** 5/pk

VR1520 Varistor ****Change each cycle****

Instructions

DOC0219 Disassembly Instructions *Free with Order!*

Cartridges

C1520 Dataproducts 1560 Compatible Cartridge *Call for Pricing!*

CM1520 MICR Dataproducts 1560 Cartridge

Fuji-Xerox XP-17

XEROX OEM # 13R95



1 Cartridge System

Engine used in Xerox 4317/4517

Toner

4317 **SUMMIT** Toner, 450g ****25 per case**** *Call for Pricing!*

4317M MICR Toner, 450g

Drums and Rollers

D4317GH HanP XP-17 Drum w/gears *Call for Pricing!*

MRS4317 New Magnetic Roller Sleeve for XP-17

Blades, Seals, Parts

WB4317 Wiper Blade ****Replace each cycle**** *Call for Pricing!*

DB4317 Doctor Blade for XP-17 ****Change with new MRS****

SS4317 Sealing Strip 10/pk



Part#

Description

Ship Qty

Fuji-Xerox XP-21



1 Cartridge System

Engine used in IBM Infoprint 21, Xerox N2125

Toner

2125 **SUMMIT** Toner, 695gm ***20 per case*** *Call for Pricing!*

Drums

D2125GH HanP XP-21 Drum, w/gears *Call for Pricing!*

Blades, Seals and Parts

DB4317 Doctor Blade *Call for Pricing!*

WB2125 Wiper Blade ***Replace each cycle***

Instructions

DOC0299 Disassembly Instructions *Free with Order!*

HP CLJ-1500/2500/2550

OEM # C9700A/C9701A
C9702A/C9703A



Color Laser Printer Engine Supplies

5 Cartridge System

Engine used in HP2500 Series

Toner

2550K **Velvetone** Chemical Black Toner, 150g ***20 per case*** *Call for Pricing!*

2550C **Velvetone** Chemical Cyan Toner, 125g ***20 per case***

2550M **Velvetone** Chemical Magenta Toner, 125g ***20 per case***

2550Y **Velvetone** Chemical Yellow Toner, 125g ***20 per case***

Chips, Parts & Seals

ML2550L Conversion Lug HP 2500-2550 (left) 10/pk *Call for Pricing!*

ML2550R Conversion Lug HP 2500-2550 (right) 10/pk

PLUG2500 HP CLJ 2500 Toner Plug 10/pk

SS2500 HP CLJ 2500 Ship Lock w/Mylar & Foam 10/pk

SSDB2500 HP CLJ 2500 Doctor Blade Sealing Foam 10/pk

XHU3500K Universal Reset Chip for Black HP CLJ 1500/2500/2550/3500/3700

XHU3500C Universal Reset Chip for Cyan HP CLJ 1500/2500/2550/3500/3700

XHU3500M Universal Reset Chip for Magenta HP CLJ 1500/2500/2550/3500/3700

XHU3500Y Universal Reset Chip for Yellow HP CLJ 1500/2500/2550/3500/3700

Instructions

DOC0312 Disassembly Instructions *Free with Order!*

HP CLJ-3500

OEM # C2670A/C2671A
C2672A/C2673A

OEM # C2670A/C2681A
C2682A/C2683A

Color Laser Printer Engine Supplies

5 Cartridge System

Engine used in HP3500/3700 Series

Toner

3500K **Velvetone** Chemical Black Toner, 140g ***25 per case*** *Call for Pricing!*

3500C **Velvetone** Chemical Cyan Toner, 140g ***25 per case***

3500M **Velvetone** Chemical Magenta Toner, 140g ***25 per case***

3500Y **Velvetone** Chemical Yellow Toner, 140g ***25 per case***

Chips

D3500GH HanP Drum w/gears for HP CLJ 3500 *Call for Pricing!*



Part#

Description

Ship Qty

HP CLJ-3500 *continued*

Chips & Seals

SS3500	HP CLJ 3500/3700 Ship Lock	10/pk	<i>Call for Pricing!</i>
XHU3500K	Universal Reset Chip for Black HP CLJ 1500/2500/2550/3500/3700		
XHU3500C	Universal Reset Chip for Cyan HP CLJ 1500/2500/2550/3500/3700		
XHU3500M	Universal Reset Chip for Magenta HP CLJ 1500/2500/2550/3500/3700		
XHU3500Y	Universal Reset Chip for Yellow HP CLJ 1500/2500/2550/3500/3700		

Instructions

DOC0340	Disassembly Instructions		<i>Free with Order!</i>
---------	--------------------------	--	-------------------------

HP CLJ-4500

OEM # C4191A/C4192A/C4193A
C4194A/C4195A

Color Laser Printer Engine Supplies



5 Cartridge System

Engine used in HP4500 Series

Toner

4500K	HP-4500 Black 360g <i>**25 per case**</i>		<i>Call for Pricing!</i>
4500C	HP-4500 Toner Cyan 280g <i>**10 per case**</i>		
4500M	HP-4500 Toner Magenta 280g <i>**10 per case**</i>		
4500Y	HP-4500 Toner Yellow 280g <i>**10 per case**</i>		

Drums

D4500GH	Drum for HP-4500		<i>Call for Pricing!</i>
---------	------------------	--	--------------------------

Chips, Blades & Seals

DB4500B	Doctor Blade for Black HP 4500 Cartridge		<i>Call for Pricing!</i>
DB4500C	Doctor Blade for Color HP 4500 Cartridge		
WB2100K	Wiper Blade for HP 2100/4500	10/ea	
XH4500R	HP 4500/8500 Resettable Drum Chip		
XMS4500	HP MasterSet Reset Box		

Cartridges

C4191A	Compatible Black Toner Cartridge		<i>Call for Pricing!</i>
C4192A	Compatible Cyan Toner Cartridge		
C4193A	Compatible Magenta Toner Cartridge		
C4194A	Compatible Yellow Toner Cartridge		
C4195A	HP 4500 OPC Cartridge		

HP CLJ-4600

OEM # C9720A/C9721A
C9722A/C9723A

Color Laser Printer Engine Supplies



5 Cartridge System

Engine used in HP4600 Series

Toner

4650K	Velvetone Chemical Black Toner, 210g <i>**10 per case**</i>		<i>Call for Pricing!</i>
4650C	Velvetone Chemical Cyan Toner, 185g <i>**10 per case**</i>		
4650M	Velvetone Chemical Magenta Toner, 185g <i>**10 per case**</i>		
4650Y	Velvetone Chemical Yellow Toner, 185g <i>**10 per case**</i>		
2170	HP-4600 Toner Black, 210g		



Part#

Description

Ship Qty

HP CLJ-4600 *continued*

Drums

D4600GF	Fuji Drum for HP-4600 w/gears	Call for Pricing!
D4600GH	HanP Drum for HP-4600 w/gears	

Chips, Blades & Seals

XH4600RC	HP 4600 Resettable Chip (Cyan)	Call for Pricing!
XH4600RM	HP 4600 Resettable Chip (Magenta)	
XH4600RY	HP 4600 Resettable Chip (Yellow)	
XH4600RK	HP 4600 Resettable Chip (Black)	
DB4600K	Doctor Blade HP 4600	5/ea.
SS4600	Split Hopper Seal HP 4600	10/pk
WB4600	Wiper Blade for HP 4600	5/ea.
RB4600	Replacement Retaining Blade	24/pk

*Located behind developer roller ** CHANGE EACH CYCLE***

Instructions

DOC0309	Disassembly Instructions	Free with Order!
---------	--------------------------	------------------

Cartridges

C9720A	Compatible Black Toner Cartridge	Call for Pricing!
C9721A	Compatible Cyan Toner Cartridge	
C9723A	Compatible Magenta Toner Cartridge	
C9722A	Compatible Yellow Toner Cartridge	

HP CLJ-8500

OEM # C4149A/C4150A

C4151A/C4152A/C4153A

Color Laser Printer Engine Supplies

5 Cartridge System

Engine used in HP CLJ-8500 Series

Toner

8500K	HP-8500 Black 600g **20 per case**	Call for Pricing!
8500C	HP-8500 Toner Cyan 345g **20 per case**	
8500M	HP-8500 Toner Magenta 345g **20 per case**	
8500Y	HP-8500 Toner Yellow 345g **20 per case**	

Chips

XH4500R	HP 4500/8500 Resettable Drum Chip	Call for Pricing!
XMS4500	HP MasterSet Reset Box	

HP-1012/1015

HP OEM#Q2612A

1 Cartridge System

Engine Used in HP-1015

Toner

1015	SUMMIT Toner, Black, 110g **25 per case**	Call for Pricing!
1015M	MICR Toner for HP 1012/1015 110g	

Drums and Rollers

D1015GH	HanP HP-1015 Drum w/gears	Call for Pricing!
PCRAXS	Soft Primary Charge Roller (AX/VX/1015/1100/1200)	10/ea.
PCR1100S	Soft Primary Charge Roller (AX/VX/1015/1100/1200)	10/ea.
MRS1015	New Magnetic Roller Sleeve	



Part#

Description

Ship Qty

HP-1012/1015 continued

Blades and Parts

WB1015	Wiper Blade	10/ea.	<i>Call for Pricing!</i>
DB1015K	Doctor Blade	5/ea.	
DS1010	Drum Spring	100/pk	
MRH1015	Mag Hub w/Elec. Contact	10/pk	

Instructions

DOC0334	Disassembly Instructions		<i>Free with Order!</i>
---------	--------------------------	--	-------------------------

Cartridges

C2612A	HP 1012/1015 Compatible Cartridge		
--------	-----------------------------------	--	--

HP-1100 (Canon EP-22X)

HP OEM#C4092A



1 Cartridge System

Engine Used in HP 1100 series

Toner

2077	Velvetone HP-1100 Toner, 145g <i>**25 per case**</i>		<i>Call for Pricing!</i>
5783	Pro-Toner, Hi Performance 140gm <i>**25 per case**</i>		
1119	SUMMIT Toner, Black, 140g <i>**25 per case**</i>		
5905B	Pro-Toner, HP 1100/AX Per-fil bag 10Kg		
9460M	MICR Toner, HP 1100, AX 140g <i>**Use for Printing Checks**</i>		

Drums and Rollers

DAXGH	HanP AX Drum w/gears		<i>Call for Pricing!</i>
DAXGF	Fuji AX Drum w/gears		
DAXGV	Velvetone AX Drum w/gears		
PCRAXS	Soft Primary Charge Roller (AX/1100/1200/1300)	10/ea.	
PCR1100S	Soft Primary Charge Roller (AX/1100/1200/1300)	10/ea.	
MRSAXG	Black Mag Roller Sleeve (AX/1100/1200/1300)	10/ea.	

Blades, Seals, Parts

WB1320K	Wiper Blade <i>**Replace each Cycle**</i>	10/ea.	<i>Call for Pricing!</i>
DBAXK	Doctor Blade <i>**Change with new MRS**</i>	10/ea.	
SSAXOG	Gold 3M Adhesive Sealing Strip	10/pk	
RBAX	Recovery Blade	25/pk	
ML1100	AX/1100 Conversion Lug.	10/pk	

☝ ****Converts an AX to an 1100!****

Instructions

DOC0191	Cartridge Recycling Instructions		<i>Free with Order!</i>
---------	----------------------------------	--	-------------------------

Cartridges

C92A	HP 1100 Compatible Cartridge		<i>Call for Pricing!</i>
CM92A	MICR HP 1100 Cartridge		

HP-1150

HP OEM# Q2624A



1 Cartridge System

Engine Used in HP-1150

Toner

1150	SUMMIT Toner, Black, 150g <i>**25 per case**</i>		<i>Call for Pricing!</i>
1150M	MICR Toner, HP-1150 170g		



Part#

Description

Ship Qty

HP-1150 *continued*

Drums and Rollers

D1212GH	HanP HP-1150/1200/1300 Drum w/gears		<i>Call for Pricing!</i>
D1212WGV	Velvetone Weighted Drum for HP-1150/1200/1300		
PCRAXS	Soft Primary Charge Roller	10/ea.	
PCR1100S	Soft Primary Charge Roller	10/ea.	

Blades, Seals, Parts

WB1320K	Wiper Blade	10/ea.	<i>Call for Pricing!</i>
DB1212K	Doctor Blade	10/ea.	
UW1200	Universal Waste Kit (HP1200/1300/1150)		
SS1212	Sealing Strip	10/pk	

Instructions

DOC0319	Disassembly Instructions for the HP-1150		<i>Free with Order!</i>
---------	--	--	-------------------------

HP-1160/1320

HP OEM# Q5949A/X



1 Cartridge System

Toner

1165	Velvetone HP1160/1320 Toner, Black, 120g Low Yield		<i>Call for Pricing!</i>
1165M	HP1160/1320 MICR Toner, 120g Low Yield		
1320	Velvetone HP1320 Toner, Black, 290g High Yield		
1320M	MICR Toner, HP1160/1320, 280g High Yield		

Drums and Rollers

D1320GV	Velvetone Drum for HP-1160/1320 w/gears		<i>Call for Pricing!</i>
MRS1320	Mag Roller Sleeve		

Chips, Blades, and Parts

XHU1324LY	HP-1160/1320/2420 Universal LY Chip		<i>Call for Pricing!</i>
XHU1324	HP-1320/2420 Universal HY Chip		
WB1320K	Wiper Blade for HP-1160/1320/1200/1300	10/ea.	
DB1320	Doctor Blade for HP-1160/1320	5/ea.	
MSB1320	Mag Sealing Blade	100/pk	
HOP1320J	Jumbo Toner Hopper 350g		
EC1320	Mag Roller End Cap	10/pk	
MRH1320	Mag Hub w/Elec. Contact	10/pk	

Instructions

DOC0356	Disassembly Instructions for HP-1200		<i>Free with Order!</i>
---------	--------------------------------------	--	-------------------------

HP-1200

HP OEM # C7115A/X, Canon X25, S35



1 Cartridge System

Engine Used in HP1000/1200 Series

Toner

2071	Velvetone HP-1200 Toner, 145g <i>**25 per case**</i>		<i>Call for Pricing!</i>
2064	Velvetone HP-1200 Toner, 190g <i>**25 per case**</i>		
1213	Pro-Toner HP-1200/1300, 150g <i>**25 per case**</i>		
5712	Pro-Toner HP-1200, 190g <i>**25 per case**</i>		
2064B	Velvetone HP-1200 Bag Toner, 10kg		
5912B	Pro-Toner HP-1200 Bag Toner, 10kg		
1212M	HP-1200 MICR Toner, 150g		

Drums

D1212GH	HanP Drum for HP-1150/1200/1300		<i>Call for Pricing!</i>
---------	---------------------------------	--	--------------------------



Part#

Description

Ship Qty

HP-1200 *continued*

Drums & Rollers

D1212WGV	Velvetone Weighted Drum for HP-1150/1200/1300		<i>Call for Pricing!</i>
PCRAXS	Soft Primary Charge Roller, AX/1100/1200/1300	10/ea.	
PCR1100S	Soft Primary Charge Roller, AX/1100/1200/1300	10/ea.	
MRS1200G	Black Mag Roller Sleeve, 1200/1300	10/ea.	

Blades, Seals and Parts

WB1320K	Wiper Blade for the HP-1200	10/ea.	<i>Call for Pricing!</i>
DB1212K	Doctor Blade for the HP-1200 <i>**Change with new MRS**</i>	10/ea.	
SS1212	Gold Adhesive Seal Strip for HP-1200	10/pk	
UW1200	Universal Waste Hoppers 1150/1200/1300		
HOP1200J	Jumbo Hopper 350g		

Instructions

DOC0275	Disassembly Instructions for HP-1200		<i>Free with Order!</i>
---------	--------------------------------------	--	-------------------------

Cartridges

C15X	HP 1200 Compatible Cartridge		<i>Call for Pricing!</i>
CM15A	MICR HP 1200 Cartridge		

HP-1300

HP OEM# Q2613A/X



1 Cartridge System

Engine Used in HP-1300 Series

Toner

2136	Velvetone HP-1300 Toner, 220g <i>**25 per case**</i>		<i>Call for Pricing!</i>
2135	Velvetone HP-1300 Toner, 150g <i>**25 per case**</i>		
5813	Pro-Toner HP-1300, HY, 220g <i>**25 per case**</i>		
1213	SUMMIT HP-1200/1300 Toner, LY, 150g <i>**25 per case**</i>		
5912B	Pro-Toner , Per-fil Bag, 10kg		

Drums & Rollers

D1212GH	HanP Drum for HP-1150/1200/1300		<i>Call for Pricing!</i>
D1212WGV	Velvetone Weighted Drum for HP-1150/1200/1300		
PCRAXS	Soft Primary Charge Roller, (AX/1100/1200/1300)	10/ea.	
PCR1100S	Soft Primary Charge Roller, (AX/1100/1200/1300)	10/ea.	
MRS1200G	Black Mag Roller Sleeve, 1200/1300	10/ea.	

Blades, Seals, Chips and Parts

WB1320K	Wiper Blade for the HP-1200	10/ea.	<i>Call for Pricing!</i>
DB1212K	Doctor Blade for the HP-1200 <i>**Change with new MRS**</i>	10/ea.	
SS1212	Gold Adhesive Seal Strip for HP-1200	10/pk	
UW1200	Universal Waste Hopper 1150/1200/1300		
XH1300AR2	HP 1300 Low Yield Replacement Chip <i>Resettable!</i>		
XH1300R2	HP 1300 High Yield Replacement Chip <i>Resettable!</i>		
XMSHP	HP MasterSet Reset Box		

Instructions

DOC0320	Disassembly Instructions for HP-1300		<i>Free with Order!</i>
---------	--------------------------------------	--	-------------------------

Cartridges

C13X	HP 1300 Compatible Cartridge		<i>Call for Pricing!</i>
CM13X	MICR HP 1300 Cartridge		



Part#

Description

Ship Qty

HP-2100 (Canon EP-32X)

HP OEM # C4096A



1 Cartridge system

Toner

1634	Velvetone LJ2100 toner, 265g <i>**25 per case**</i>		<i>Call for Pricing!</i>
5621	Pro-Toner , Hi Performance 260gm <i>**25 per case**</i>		
2121	SUMMIT Toner, 225g <i>**25 per case**</i>		
5640B	Pro-Toner , 4000/2100 Per-fil bag 10Kg		
2100M	MICR Toner, 225g		

Drums and Rollers

D2100GH	HanP Drum with gears		<i>Call for Pricing!</i>
D2100WGV	Velvetone Weighted Drum w/gears		
MRS4000G	Mag Roller Sleeve for HP-2100/4000/4100	10/ea.	
PCR4000S	Soft Primary Charge Roller	10/ea.	
PCR4100S	Soft Primary Charge Roller	10/ea.	

Blades, Seals and Parts

WB2100K	Wiper Blade	10/ea.	<i>Call for Pricing!</i>
DB4000K	Doctor Blade for the HP-2100 <i>**Change with new MRS**</i>	10/ea.	
SSFM	Split Hopper Side Foam Seal <i>Use 2/Cartridge</i>	10/pk	
SS4000	Split Hopper Seal	10/pk	
CLIP242P	Plastic Hopper Rail 242mm	200/pk	
CLIP242M	242mm Metal Rails	100/pk	
CLIP165	Split Hopper, 165mm Clip <i>Use 2/Cartridge</i>	50/pk	
CLIP4	Split Hopper, 4mm Clip <i>Use 6/Cartridge</i>	500/pk	
HOP2100J	Jumbo Toner Hopper, 500g		
UW2300	Universal Waste Kit (HP2100/2300)		
PLUG2100	Toner Hopper Plug	100/pk	
PIN2100	Cartridge Pin	50/pk	
TAB2100	Replacement Cartridge Activation Fin	10/pk	

Instructions

DOC0252	Disassembly Instructions for HP-2100		<i>Free with Order!</i>
---------	--------------------------------------	--	-------------------------

Cartridges

C96A	HP 2100 Compatible Cartridge		<i>Call for Pricing!</i>
CM96A	MICR HP 2100 Cartridge <i>*Use for printing checks*</i>		

HP-2300

HP OEM# Q2610A



1 Cartridge system

Toner

2137	Velvetone HP-2300 Toner, 350g <i>**25 per case**</i>		<i>Call for Pricing!</i>
2300	Velvetone HP-2300 GRAPHIC Toner, 350g <i>**25 per case**</i>		
5300	Pro-Toner , Hi Performance Toner, 350g <i>**25 per case**</i>		
2300M	HP-2300 MICR Toner, 350g		

Drums and Rollers

D2300GH	HanP Drum for HP-2300		<i>Call for Pricing!</i>
---------	-----------------------	--	--------------------------

Chips, Blades and Parts

WB2100K	Wiper Blade	10/ea.	<i>Call for Pricing!</i>
DB2300	Doctor Blade	5/ea.	
HOP2300J	Jumbo Toner Hopper 550g		
UW2300	Universal Waste Kit (HP-2100/2300)		
XH2300R2	HP 2300 High Yield Replacement Chip <i>Resettable!</i>		



Part#

Description

Ship Qty

HP-2300 *continued*

Chips

XMSHP HP MasterSet Reset Box *Call for Pricing!*

Instructions

DOC0321 Disassembly Instructions for HP-2300 *Free with Order!*

Cartridges

C2610A HP 2300 Compatible Cartridge *Call for Pricing!*

CM2610A MICR HP 2300 Cartridge **Use for printing checks**

HP-2420

HP OEM# Q6511A/X



1 Cartridge system

Toner

2410 **Velvetone** HP2420 Toner, Black, 290g ***25 per case*** *Call for Pricing!*

2420 **Velvetone** HP2420 Toner, Black, 590g ***20 per case***

2420M MICR Toner for HP-2420, 320g

Drums and Roller

D2420GH HanP Drum for HP-2420 *Call for Pricing!*

MRS4000G Mag Roller Sleeve for HP-2100/2420/4000/4100 10/ea.

Chips, Blades, Parts

WB2100K Wiper Blade for HP2100/2300/2420 10/ea. *Call for Pricing!*

HOP2420J Jumbo Toner Hopper 800g

ML2420L HP-2420 Left End Cap 10/pk

ML2420RG HP-2420 Right End Cap w/gears 10/pk

XHU1324LY HP-1160/1320/2420 Universal LY Chip

XHU1324 HP-1320/2420 Universal HY Chip

HP-4000 (Canon EP-52X)

HP OEM#C4127A/X



1 Cartridge System

Engine Used in HP 4000, 4050 series

Toner

1496 **Velvetone** LJ4000 Toner, 300g ***25 per case*** *Call for Pricing!*

1610 **Velvetone** LJ4000/5000, 500g ***25 per case***

5640 **Pro-Toner, Hi Performance**, 500g ***25 per case***

4000 **SUMMIT** Toner, 500gm ***25 per case***

5640B **Pro-Toner**, 4000/2100 Per-fil bag 10Kg

1610B **Velvetone** LJ4000/5000 Bag Toner, 10k

8904MT MICR Toner, 500 grams

Drums and Rollers

D4000GH HanP Long Life Drum w/gears Weighted *Call for Pricing!*

D4000WGV **Velvetone** Drum for HP-4000 w/gears Weighted

PCR4000S **Soft** Primary Charge Roller 10/ea.

PCR4100S **Soft** Primary Charge Roller 10/ea.

MRS4000G Mag Roller Sleeve for HP2100/4000/4100 10/ea.

Blades, Seals, Parts

WB4000K Wiper Blade ***Replace each Cycle*** 10/ea. *Call for Pricing!*

DB4000K Doctor Blade ***Change with New MRS*** 10/ea.

RB4000 Recovery Blade 25/pk

ST1 Seal Tab, Black 100/pk



Part#

Description

Ship Qty

HP-4000 (Canon EP-52X) continued

Seals and Parts

SS4000	Split Hopper Seal	10/pk	<i>Call for Pricing!</i>
CLIP242P	Plastic Hopper Rail 242mm	200/pk	
CLIP242M	242mm Metal Rails	100/pk	
CLIP165	Split Hopper, 165mm Clip <i>Use 2/Cartridge</i>	50/pk	
CLIP4	Split Hopper, 4mm Clip <i>**Use 6/Cartridge**</i>	1000/pk	
SSFM	Split Hopper Side Foam Seal <i>Use 2/Cartridge</i>	10/pk	
ARM4000	Drum Shutter Arm	10/pk	
PIN4000	Universal Pin for HP-4000	50/pk	
MST4000	Mag Stabilizer for HP-4000 Black	10/pk	
MST4000W	Mag Stabilizer for HP-4000 White	10/pk	
EC4000	Mag Roller Bushing Set for HP-4000	10/pk	
ML4000L	Left Clip for HP-4000	10/pk	
ML4000R	Right Clip for HP-4000	10/pk	
PLUG4000	Toner Hopper Cap for HP-4000	100/pk	
HOP27XFX6	27X to FX6/2100 Conversion Hopper	each	
HOP4000J	Jumbo Toner Hopper 750g	each	
HOP4000	Toner Hopper with Mag Housing	each	

***No need to split hopper for seal.** Converts 27A to 27X.*

Instructions

DOC0236	Cartridge Disassembly Instructions	<i>Free with Order!</i>
---------	------------------------------------	-------------------------

Cartridges

C27X	HP 4000 High Yield Compatible Cartridge	<i>Call for Pricing!</i>
CM27X	MICR HP 4000 Cartridge (6000 yield)	

HP-4100

OEM # C8061A/X



1 Cartridge System

Engine Used in HP4100 Series



These cartridges use a reset chip. The cartridge will work without a new chip, but the toner low function will not work. See Document #0276 for more information

Toner

2015	Velvetone HP-4100 Toner, 500g <i>**25 per case**</i>	<i>Call for Pricing!</i>
2015B	LJ4100 Bag Toner, 10kg	
4100M	HP-4100 MICR Toner, 500gm	

Drums and Rollers

D4100GH	HanP Drum for HP-4100 Hi-Yield (weighted)	<i>Call for Pricing!</i>
D4100WGV	Velvetone Drum for HP-4100 w/gears (weighted)	
PCR4000S	Soft Primary Charge Roller for HP-4100	10/ea.
PCR4100S	Soft Primary Charge Roller for HP-4100	10/ea.
MRS4000G	Mag Roller Sleeve for HP2100/4000/4100	10/ea.

Blades and Parts

WB4000K	Wiper Blade for HP-4100	10/ea.	<i>Call for Pricing!</i>
DB4000K	Doctor Blade <i>**Change with new MRS**</i>	10/ea.	
CLIP4100	Split Hopper Clips	100/pk	
HOP27XFX6	27X to FX6/2100 Conversion Hopper		
HOP4100J	Jumbo Toner Hopper 750g		



Part#

Description

Ship Qty

HP-4100 *continued*

Chips

XH4100R HP 4100 Replacement Chip *Resettable!* *Call for Pricing!*

Instructions

DOC0276 Disassembly Instructions *Free with Order!*

Cartridges

C61X HP 4100 Compatible Cartridge *Call for Pricing!*

CM61X MICR HP 4100 Cartridge

HP-4200

OEM # Q1338A



1 Cartridge System

Engine Used in HP4200 Series

Toner

2142 **Velvetone** HP-4200 Toner, 690g ***20 per case*** *Call for Pricing!*

5422 HP-4200 Polyester **Pro-Toner** 690gm ***20 per case***

4200B HP-4200 Polyester **Pro-Toner** 10kg

4200M MICR HP 4200 Toner 680g

Drums and Rollers

D4200GH HanP HP-4200/4300 Drum w /gears *Call for Pricing!*

D4200WGV **Velvetone** Drum for HP-4200 (weighted)

PCR4000S **Soft** Primary Charge Roller HP-4200 10/ea.

PCR4100S **Soft** Primary Charge Roller HP-4200 10/ea.

MRS4200G **Black** Mag Roller Sleeve for HP-4200/4300 10/ea.

TECH TIP A Mag roller press is required for proper installation

MRP4243 Mag Roller Press HP-4200/4300

Chips, Blades and Parts

WB4200K Wiper Blade ***Replace each cycle*** 10/ea. *Call for Pricing!*

DB4200K Doctor Blade ***Replace each cycle*** 10/ea.

EC4200 Bushing Set (Bushings, Spacers, Wipers) 10/pk

HOP4200J Jumbo Toner Hopper 1100g

CLIP4200 Plastic Rail & 4 Screws 100/pk

ML4200L HP Universal End Cap (Left)

ML4200R HP Universal End Cap (Right)

SS4200 Foam Seal 10/pk

UW4200 HP-4200 Universal Waste Bin

XHU4250R2 HP Universal 4250/4350/4200/4300 HY Resettable Chip

XMSHP HP MasterSet Reset Box

Instructions

DOC0314 Disassembly Instructions *Free with Order!*

Cartridges

C38A HP 4200 Compatible Cartridge *Call for Pricing!*

CM38A MICR HP 4200 Cartridge (6000 yield)



Part#

Description

Ship Qty

HP-4250/4350

OEM # Q5942A/X



1 Cartridge System

Toner

2141	Velvetone HP 4250/4350 Toner, 10K 550g **20 per case**	Call for Pricing!
2143	Velvetone HP 4250/4350 Toner, 1020g **15 per case**	
5495	HP 4250/4350 Polyester Pro-Toner , 550g **25 per case**	
5433	HP 4250/4350 Polyester Pro-Toner , 1100g **15 per case**	
4350M	HP 4250/4350 MICR Toner, 550g	

Drums and Rollers

D4200GH	HanP HP-4250/4350 Drum w/gears	Call for Pricing!
D4200WGV	Velvetone Drum for HP-4250/4350 (weighted)	
PCR4000S	Soft Primary Charge Roller HP-4250/4350	10/ea.
PCR4100S	Soft Primary Charge Roller HP-4250/4350	10/ea.
MRS4200G	Mag Roller Sleeve for HP-4200/4300/4250/4350	10/ea.

Chips, Blades, Parts

WB4200K	Wiper Blade for HP4200/4300/4250/4350	10/ea.	Call for Pricing!
DB4200K	Doctor Blade for HP4200/4300/4250/4350	10/ea.	
ML4200L	HP Universal End Cap (Left)		
ML4200R	HP Universal End Cap (Right)		
UW4200	HP-4200 Universal Waste Bin		
XH4250AR2	HP 4250/4350 Low Yield Resettable Chip		
XHU4250R2	HP Universal 4250/4350/4200/4300 HY Resettable Chip		
XMSHP	HP MasterSet Reset Box		

Instructions

DOC0358	Disassembly Instructions	Free with Order!
---------	--------------------------	------------------

HP-4300

OEM # Q1339A



1 Cartridge System

Engine Used in HP4300 Series

Toner

2143	Velvetone HP-4300 toner, 1020g **15 per case**	Call for Pricing!
5433	HP-4300 Polyester Pro-Toner 1100g **15 per case**	
4300M	MICR HP 4300 Toner 960g	

Drums, Rollers, Blades and Parts

D4200GH	HP-4200/4300 HanP Drum w/gears	Call for Pricing!
D4200WGV	Velvetone Drum for HP-4250/4350 (weighted)	
PCR4000S	Soft Primary Charge Roller HP-4250/4350	10/ea.
PCR4100S	Soft Primary Charge Roller HP-4250/4350	10/ea.
MRS4200G	Black Mag Roller Sleeve for HP-4200/4300	10/ea.
TECH TIP	A Mag roller press is required for proper installation	
MRP4243	Mag Roller Press HP-4200/4300	
WB4200K	Wiper Blade **Replace each cycle**	10/ea.
DB4200K	Doctor Blade **Replace each cycle**	10/ea.
ML4200L	HP Universal End Cap (Left)	
ML4200R	HP Universal End Cap (Right)	
UW4200	HP-4200 Universal Waste Bin	
XHU4250R2	HP Universal 4250/4350/4200/4300 HY Resettable Chip	
XMSHP	HP MasterSet Reset Box	



Part#

Description

Ship Qty

HP-4300 *continued*

Instructions

DOC0314 Disassembly Instructions *Free with Order!*

Cartridges

C39A HP 4300 Compatible Cartridge *Call for Pricing!*
 CM39A MICR HP 4300 Cartridge

HP-5000 (Canon P-380)

HP OEM#C4129X



1 Cartridge System

Engine Used in HP 5000 series

Toner

1610 **Velvetone** LJ4000/5000, 500g ***25 per case*** *Call for Pricing!*
 5640 **Pro-Toner**, Hi Performance 500gm ***25 per case***
 4000 **SUMMIT** Toner, 500gm ***25 per case***
 5640B **Pro-Toner**, 4000/2100 Per-fil bag 10Kg
 1610B **Velvetone** LJ4000/5000 Bag Toner, 10Kg
 8904MT MICR Toner, 500 grams

Drums and Rollers

D5000GH HanP HP-5000 Drum w/gears *Call for Pricing!*
 PCR5000 5000/8100 Primary Charge Roller (New) 10/ea.
 MRS5000G Mag Roller Sleeve (New) 10/ea.

Blades, Seals, Parts

WB5000K Wiper Blade ***Replace each Cycle*** 10/ea. *Call for Pricing!*
 DB5000K Doctor Blade ***Change with new MRS*** 10/ea.
 ARM5000 Drum Shutter Arm 10/pk
 ML5000R Mounting Lug, Right Side 10/pk
 PIN2100 Cartridge Pin 50/pk
 CLIP242P Plastic Hopper Rail 242mm 200/pk
 CLIP242M 242mm Metal Rails 100/pk
 CLIP165 Split Hopper, 165mm Clip *Use 2/Cartridge* 50/pk
 CLIP4 Split Hopper, 4mm Clip 500/pk
 SS5000 Split Hopper Seal 10/pk

Instructions

DOC0248 Disassembly Instructions *Free with Order!*

Cartridges

C29X HP 5000 Compatible Cartridge *Call for Pricing!*
 CM29X MICR HP 5000 Cartridge **Use for printing checks**

HP-8100 (Canon EP-72X)

HP OEM#C4182X



1 Cartridge System

Engine Used in HP 8100 series

Toner

2078 **Velvetone** 8100 Toner, 1100g ***15 per case*** *Call for Pricing!*
 5681 **Pro-Toner**, High Yield, 850g ***20 per case***
Yields 25,000 pages with an average density of 1.43!
 5681B **Pro-Toner**, Per-fil Bag, 10kg
 8100M MICR Toner, 1100g



Part#

Description

Ship Qty

HP-8100 (Canon EP-72X) continued

Drums and Rollers

D8100GH	HanP HP-8100 Drum w/gears		Call for Pricing!
D8100GH3	HanP HP-8100 High Yield Drum w/gears		
D8100WGV	Velvetone HP-8100 Drum w/gears (weighted)		
PCR5000	New 8100/5000 Primary Charge Roller	10/ea.	
MRS8100G	Black 8100/WX Mag Roller Sleeve	10/ea.	



The OEM Mag Roller Sleeve will not last a full cycle
A Mag roller press is required for proper installation

MRPWX	Mag Roller Press WX/8100 <i>**Removes and Installs Metal Hub**</i>		
-------	---	--	--

Blades, Seals, Parts

DBWX	Doctor Blade <i>**Change with new MRS**</i>	10/ea.	Call for Pricing!
WB5000K	Wiper Blade <i>**Replace each Cycle**</i>	10/ea.	
RBWX	Recovery Blade	25/pk	
RINGWX	Drum Axle Ring	10/pk	
CLIP8100L	Clip, Left <i>**Replace each Cycle**</i>	10/pk	
CLIP8100R	Clip, Right <i>**Replace each Cycle**</i>	10/pk	
SSWXF	Split Hopper Seal - HP-8100/WX	10/pk	

Instructions

DOC0253	Disassembly Instructions		Free with Order!
---------	--------------------------	--	------------------

Cartridges

C82X	HP-8100 Compatible Cartridge		Call for Pricing!
CM82X	HP-8100 Compatible MICR Cartridge		

IBM/Lexmark 4019/29

Lexmark OEM# 1380200/1380520



1 Cartridge System

Engine Used in IBM 4019, 4019E, 4029 and others.

Toner

4049	Velvetone 4019 Toner, 500g <i>**20 per case**</i>		Call for Pricing!
4019M	MICR Toner, 300 g		

Drums and Rollers

D4019GH	HanP IBM 4019 Drum w/gears		Call for Pricing!
---------	----------------------------	--	-------------------

Blades, Seals, Parts

WB4019	Wiper Blade <i>**Replace each Cycle**</i>		Call for Pricing!
4019KIT	Upgrade Kit		

Black Recovery Blade, Retaining Blade, Hopper Cover, Electrostatic Shims all for toner supply.

Waste Hopper Recovery Blade and 4 1/4" #4 sheet metal screws.

Use to upgrade 4019, 4039 & 4049 toner cartridges. Recommended on first recharge.

RB4019	Recovery Blade <i>**Mounts opposite wiper blade**</i>	25/pk	
FWIBM	Felt Wand	5/pk	
TAB4019	Actuator Tab <i>**Activates laser shutter**</i>	10/pk	
PEGIBM	Toner Hopper Stabilizer	50/pk	
PCW4019	Primary Corona Wire - IBM 4019 (pre 6/92)	5/pk	
PCW4029	Primary Corona Wire - IBM 4029 (post 6/92)	5/pk	

Instructions

DOC0160	Disassembly Instructions		Free with Order!
---------	--------------------------	--	------------------



Part#

Description

Ship Qty

IBM/Lexmark 4037

Lexmark OEM# 1382760



1 Cartridge System

Engine used in the IBM 4037.

Toner

4049	Toner, Black, 500g **Use 200g per cartridge**	<i>Call for Pricing!</i>
DOC0235	Disassembly Instructions	<i>Free with Order!</i>

IBM/Lexmark 4039

Lexmark OEM#1380850/1380950



1 Cartridge System

Engine used in the IBM 4039.

Toner

2051	Velvetone 4039/49 Toner, 500g **20 per case**	<i>Call for Pricing!</i>
4039	Toner, Black 500g **20 per case**	
4039M	MICR Toner, 500g	

Drums and Rollers

D4349GF	FUJI IBM 4039/4049 Drum w/gears	<i>Call for Pricing!</i>
D4349GH	HanP IBM 4039/4049 Drum w/gears	
PCR4349	4039/4049 Primary Charge Roller	10/ea.

TECH TIP

In the IBM 4039 & 4049 cartridges that have "clear", "opaque", or "tan" Primary Charge Rollers, these PCRs will fail in the first cycle. We recommend that the PCR be replaced with part# PCR4349.

Blades, Seals, Parts

WB4019	Wiper Blade **Replace each Cycle**	<i>Call for Pricing!</i>
4019KIT	Upgrade Kit	

Black Recovery Blade, Retaining Blade, Hopper Cover, Electrostatic Shims all for toner supply.

Waste Hopper Recovery Blade and 4 1/4" #4 sheet metal screws.

Use to upgrade 4019, 4039 & 4049 toner cartridges. Recommended on first recharge.

RB4019	Recovery Blade **Mounts opposite wiper blade**	25/pk
FWIBM	Felt Wand	5/pk
TAB4019	Actuator Tab **Activates laser shutter**	10/pk
WASH4349	Spring Washer for Drum Axle	50/pk
PEGIBM	Toner Hopper Stabilizer	

Instructions

DOC0160	Disassembly Instructions	<i>Free with Order!</i>
---------	--------------------------	-------------------------

IBM/Lexmark 4049

OEM# 1382100/1382150



1 Cartridge System

Engine used in the IBM 4049 Opra.

Toner

2049	Velvetone 4049 toner, 300g **20 per case**	<i>Call for Pricing!</i>
4049	Toner, Black 500g **20 per case**	

Drums and Rollers

D4349GF	Fuji IBM 4039/4049 Drum w/gears	<i>Call for Pricing!</i>
D4349GH	HanP IBM 4039/4049 Drum w/gears	
PCR4349	4049/4039 Primary Charge Roller	10/ea.

TECH TIP

In the IBM 4039 & 4049 cartridges that have "clear", "opaque", or "tan" Primary Charge Rollers, these PCRs will fail in the first cycle. We recommend that the PCR be replaced with part# PCR4349.



Part#

Description

Ship Qty

IBM/Lexmark 4049 *continued*

Blades, Seals, Parts

WB4019	Wiper Blade <i>**Replace each Cycle**</i>		<i>Call for Pricing!</i>
4019KIT	Upgrade Kit <i>Black Recovery Blade, Retaining Blade, Hopper Cover, Electrostatic Shims all for toner supply. Waste Hopper Recovery Blade and 4 1/4" #4 sheet metal screws. Use to upgrade 4019, 4039 & 4049 toner cartridges. Recommended on first recharge.</i>		
RB4019	Recovery Blade <i>**Mounts opposite the Wiper Blade**</i>	25/pk	
FWIBM	Felt Wand	5/pk	
TAB4019	Actuator Tab <i>**Activates laser shutter**</i>	10/pk	
WASH4349	Spring Wash for Drum Axle <i>**Electrical contact wave washer**</i>	50/pk	
PEGIBM	Toner Hopper Stabilizer	50/pk	

Instructions

DOC0160	Disassembly Instructions		<i>Free with Order!</i>
---------	--------------------------	--	-------------------------

IBM/Lexmark 4059 (Optra S)

OEM Non-Prebate #'s: 1382620/1382625



1 Cartridge System

Engine used in Lexmark OPTRA-S Series.

TECH TIP

Lexmark has released both "Prebate" and "Non-prebate" versions of both cartridges for the OPTRA-S series of printers. According to Lexmark, only the "Non-Prebate" cartridges can legally be remanufactured.

TECH TIP

See Doc #0242 (Disassembly Instructions) for more info. 1382620=Non prebate std cart; 1382625=Non prebate High Yield Cart; 1382960=Prebate std cart; 1382925=Prebate HY cart.

Toner

2040	Lexmark Optra S toner, 480g <i>**20 per case**</i>		<i>Call for Pricing!</i>
5759	Pro-Toner , Hi Performance 500g <i>**20 per case**</i>		
5859B	Pro-Toner , 4059 Per-fil bag, 10kg		
2040B	Lexmark Optra S Per-fil bag, 10kg		
4204MT	MICR Toner, 500g		

Drums and Rollers

D4059GH	HanP Drum with gears		<i>Call for Pricing!</i>
---------	----------------------	--	--------------------------

Blades, Seals, Parts

WB4059K	Wiper Blade <i>**Replace each Cycle**</i>	5/ea	<i>Call for Pricing!</i>
RB4059	Recovery Blade	25/pk	
FW4059	Felt Wand	10/pk	
SS4059	Shipping Lock	10/pk	
DCLEX	OPC Cover	10/pk	

Instructions

DOC0242	IBM 4059 Disassembly Instructions		<i>Free with Order!</i>
---------	-----------------------------------	--	-------------------------

Cartridges

C4059	Lexmark 4059, Optra S Compatible Hi Yield		<i>Call for Pricing!</i>
CM4059	MICR Lexmark 4059, Optra S Series		

Kyocera F-1000 (TK-4)

Kyocera OEM#TK-4/DK3



2 Cartridge System

Drums

D1000GA	AEG Kyocera F-1000 Drum w/gear <i>Must supply your own fuse!</i>	CLOSEOUT!	<i>Call for Pricing!</i>
---------	---	------------------	--------------------------



Part#

Description

Ship Qty

Kyocera F-1000 (TK-4) *continued*

Blades

RB1000	Recovery Blade <i>**Mounts opposite the wiper blade**</i>	10/pk	Call for Pricing!
WB1000	Wiper Blade <i>**Replace each Cycle!**</i>		

Instructions

DOC0224	OPC Recycle Instructions		Free with Order!
---------	--------------------------	--	------------------

Kyocera F-3010 (TK-2)

Kyocera OEM#TK-2/DK-2



3 Cartridge System

Toner

3010GTK	Toner Kit, 200g with Felt Wand and Waste Bottle		Call for Pricing!
---------	---	--	-------------------

Drums

D1000GA	AEG Kyocera F-3010 Drum w/gear <i>Must supply your own fuse!</i>	CLOSEOUT!	Call for Pricing!
---------	---	------------------	-------------------

Blades and Parts

RB1000	Recovery Blade <i>**Mounts opposite the wiper blade**</i>	10/pk	Call for Pricing!
WB1000	Wiper Blade <i>**Replace each Cycle!**</i>		
FELT3000	Felt for Kyocera F-3010 wand	10/ea.	

Instructions

DOC0224	OPC Recycle Instructions		Free with Order!
---------	--------------------------	--	------------------

Kyocera F-800A (TK-6)

Kyocera OEM#TK-6/DK-5



3 Cartridge System

Blades

WB800KY	Wiper Blade <i>**Replace each Cycle!**</i>		Call for Pricing!
RB800KY	Recovery Blade <i>**Mounts opposite the wiper blade**</i>	25/pk	

Instructions

DOC0225	Disassembly Instructions		Free with Order!
---------	--------------------------	--	------------------

Kyocera FS-1500 (TK-9)

Kyocera OEM# 1500KYTK



2 Cartridge System

1500KYTK	Toner Kit, 190gm with Felt Wand and Waste Bottle		Call for Pricing!
----------	--	--	-------------------

Kyocera FS-1700/3700/3750 (TK-20)

Kyocera OEM# TK-20



2 Cartridge System

Parts

GC20	Grid Cleaner		Call for Pricing!
WHOP20	Waste Container		

Lexmark 4069 (Optra T,SE)

Lexmark OEM # 12A5840/5849, 12A0825 Prebate

Lexmark OEM # 12A5740/5745 Non-Prebate



1 Cartridge System

Toner

5769	Pro-Toner , Optra T, SE, 600g <i>**20 per case**</i>		Call for Pricing!
2052	Velvetone Lexmark Optra T/SE Toner, 600g <i>**15 per case**</i>		
2052B	Velvetone Lexmark Optra T/SE Toner Bag, 10kg		
5859B	Pro-Toner , Per-fil Bag, 10kg		



Part#

Description

Ship Qty

Lexmark 4069 (Optra T, SE) continued

Toner

4069M Optra T, SE MICR Toner, 700g ***20 per case*** *Call for Pricing!*

Drums and Rollers

D4059GH HanP Drum with gears *Call for Pricing!*

Chips, Blades, Parts

XL4069M Reset Chip for the Optra T, *multi use* *Call for Pricing!*

XL4069S Reset Chip for the Optra T, *must replace each cycle!*

FW4059 Felt Wand 10/pk

DCLEX OPC Cover 10/pk

WB4059K Wiper Blade ***Replace each Cycle*** 5/ea

Instructions

DOC0304 Disassembly Instructions *Free with Order!*

Cartridges

C4069 Lexmark 4069, Optra T Compatible Hi Yield Cartridge *Call for Pricing!*

CM4069 MICR Lexmark 4069, Optra T Series Compatible Cartridge

Lexmark E-220

Lexmark OEM #12S0300(2.5K), 12S0400(2.5K)



1 Cartridge System

Toner

220 E-220 Polyester Toner, 95g ***25 per case*** *Call for Pricing!*

Drums and Rollers

DE321GH E-321 Drum w/Gears *Call for Pricing!*

Chips, Blades, Parts

WBE320 Wiper Blade for the Lexmark E-220/320/321 *Call for Pricing!*

XLU321LYR E-220 Low Yield Universal Resettable Chip (2,500)

XLU321R E-220 High Yield Universal Resettable Chip (6,000)

Lexmark E-230/238/240/330/340

Lexmark OEM #12A8400(2.5K), 12A8405(6K)



2 Cartridge System

Toner

240 PolyTone Low Yield Toner for Lexmark E240/340, 90g ***25 per case*** *Call for Pricing!*

340 PolyTone High Yield Toner for Lexmark E240/340, 170g ***25 per case***

332 PolyTone High Yield Toner for Lexmark E230/330 200g ***25 per case***

Drums and Chips

D340GH Lexmark 230/232/238/240/330/340, Dell 1700/1710 Drum w/gears *Call for Pricing!*

XLU240R Lexmark 230/232/238/240/330/340, Dell 1700/1710 2.5k Chip

XLU340R Lexmark 240/330/340, Dell 1700/1710 6k Chip

XLU340RE Lexmark 240/330/340, Dell 1700/1710 6k Chip (Europe)

Lexmark E-320/322

Lexmark OEM # 08A0476 (3K), 08A04786 (6K)



1 Cartridge System

Toner

2132 **Velvetone** E320 Toner, 185g ***25 per case*** *Call for Pricing!*

2133 **Velvetone** E320 Toner, 225g ***25 per case***

3320 Polyester E320 Toner, 225g ***25 per case***

321M MICR Toner for Lexmark E320/321/322/323/ 200g



Part#

Description

Ship Qty

Lexmark E-320/322 continued

Drums and Rollers

DE320GH HanP E-320 Drum w/Gears *Call for Pricing!*

Blades and Chips

WBE320 Wiper Blade for the Lexmark E-320/321 *Call for Pricing!*

XLX320S High Yield Reset Chip for the E-320 *must replace each cycle!*

Instructions

DOC0296 Disassembly Instructions *Free with Order!*

Cartridges

CE320 Lexmark E320 Compatible Cartridge *Call for Pricing!*

Lexmark E-321

Lexmark OEM # 12A7400 (3K), 12A7405 (6K)



1 Cartridge System

Toner

321 E-321 Polyester Toner, 120g ***25 per case*** *Call for Pricing!*

323 E-321 Polyester Toner, 225g ***25 per case***

321M MICR Toner for Lexmark E320/321/322/323/ 200g

Drums and Rollers

DE321GH E-321 Drum w/Gears *Call for Pricing!*

Seals and Parts

WBE320 Wiper Blade for the Lexmark E-320/321 *Call for Pricing!*

XLU321R E-321 Universal High Yield Resettable Chip (6,000)

XLU321LYR E-321/220 Low Yield Universal Resettable Chip (2,500)

XMSLEX2 Lexmark MasterSet Reset Box (USB)

Instructions

DOC0331 Disassembly Instructions *Free with Order!*

Cartridges

CE321 Lexmark E321 Compatible Cartridge *Call for Pricing!*

Lexmark Optra M

Lexmark OEM # 4K00198/199

Lexmark OEM # 17G0152/0154



1 Cartridge System

Toner

1493 **Velvetone** Optra M410 Toner, 320g ***25 per case*** *Call for Pricing!*

5610 Optra M Black Toner, 320g ***25 per case***

Drums

D4310GH Optra M Series Drum with Gears *Call for Pricing!*

Seals and Parts

FW5610 Felt Wand for Optra M 5/pk *Call for Pricing!*

SS4310 Shipping Lock for the Optra M 10/pk

WB5610 Wiper Blade

Instructions

DOC0281 Disassembly Instructions *Free with Order!*



Part#

Description

Ship Qty

Lexmark T-420/421, X-422



Lexmark OEM # 12A7410 (5K), 12A7415 (10K), 12A4715 (X422 12K)

1 Cartridge System

Toner

420	T-420 Polyester Toner, 195g STD. <i>**25 per case**</i>	<i>Call for Pricing!</i>
420M	MICR Toner for Lexmark T-420, 175g	
421	T-421 Polyester Toner, 375g HY. <i>**25 per case**</i>	
422	X-422 Polyester Toner, 410g	

Drums and Rollers

D420GH	HanP Long Life Drum with gears	<i>Call for Pricing!</i>
--------	--------------------------------	--------------------------

Chips, Blades, Parts

WBT420	T420 Wiper Blade	<i>Call for Pricing!</i>
DB420	Lexmark T420 Doctor Blade	
SST420	T420 Shipping Lock	10/pk
XLU420R	T-420 Universal Resettable Chip	
XLU422	X-422 Chip	
XMSLEX2	Lexmark MasterSet Reset Box (USB)	

Instructions

DOC0318	Disassembly Instructions	<i>Free with Order!</i>
---------	--------------------------	-------------------------

Cartridges

CT420	Lexmark T420 Compatible Cartridge	<i>Call for Pricing!</i>
-------	-----------------------------------	--------------------------

Lexmark T-430

Lexmark OEM # 12A8420 (6K), 12A8425 (12K)

1 Cartridge System

Toner

420	Lexmark T-420/430 Polyester Toner 195g	<i>Call for Pricing!</i>
421	Lexmark T-420/430 Polyester Toner 375g	

Chips and Parts

SST420	T420 Shipping Lock	10/pk	<i>Call for Pricing!</i>
XLU430R	T-430 Universal Resettable Chip		

Lexmark T-520

Lexmark OEM # Prebate 12A6830 (7.5K), 12A6835 (20K)

Lexmark OEM # Non-Prebate 12A6730 (7.5K), 12A6735 (20K)



1 Cartridge System

Toner

520	T-520 Toner, 670g <i>**20 per case**</i>	<i>Call for Pricing!</i>
2155	Lexmark T520/522 Toner, 635g <i>**20 per case**</i>	
520M	MICR Toner for Lexmark T-520, 300g	

Drums and Rollers

D4059GH	HanP Drum with gears	<i>Call for Pricing!</i>
---------	----------------------	--------------------------

Chips, Blades, Parts

XLU520R	T-520 Universal Resettable Chip	<i>Call for Pricing!</i>
XMSLEX2	Lexmark MasterSet Reset Box (USB)	
DCLEX	OPC Cover	10/pk
FW4059	Felt Wand	10/pk
WB4059K	Wiper Blade <i>**Replace each Cycle**</i>	5/ea



Part#

Description

Ship Qty

Lexmark T-520 *continued*

Instructions

DOC0302 Disassembly Instructions *Free with Order!*

Cartridges

CT520 Lexmark T-520 Compatible Cartridge *Call for Pricing!*

Lexmark T-620

Lexmark OEM # Prebate 12A6860 (10K), 12A6865 (30K)

Lexmark OEM # Non-Prebate 12A6760 (10K), 12A6765 (30K)



1 Cartridge System

Toner

2162 Lexmark T-620 Toner, 850g ***15 per case*** *Call for Pricing!*
 6230 Lexmark T-620/630 Polyester Toner 21k, 530g ***15 per case***
 6234 Lexmark T-620/630 Polyester Toner 32k, 870g ***15 per case***
 620M MICR Toner for Lexmark T-620, 300g

Drums and Rollers

D4059GH HanP Drum with gears *Call for Pricing!*

Chips, Blades, Parts

DCLEX OPC Cover 10/pk *Call for Pricing!*
 FW4059 Felt Wand 10/pk
 WB4059K Wiper Blade ***Replace each Cycle*** 5/ea
 XLU620R T-620 Universal Resettable Chip
 XMSLEX2 Lexmark MasterSet Reset Box (USB)

Instructions

DOC0304 Disassembly Instructions *Free with Order!*

Cartridges

CT620 Lexmark T-620 Compatible Cartridge *Call for Pricing!*



Lexmark T-630

Lexmark OEM # 12A7460 (5K), 12A7462 (21K), 12A7465 (32K)

1 Cartridge System

Toner

2197 Toner for T630/632/634, 580g ***15 per case*** *Call for Pricing!*
 6230 Lexmark T-620/630 Polyester Toner 21k, 530g ***15 per case***
 6234 Lexmark T-620/630 Polyester Toner 32k, 870g ***15 per case***
 630M T-630 MICR Toner 635g

Drums and Rollers

D4059GH HanP Drum with gears *Call for Pricing!*

Chips, Blades, Parts

XLU630R T-630/632/634 High Yield Universal Resettable Chip 21K *Call for Pricing!*
 XLU632HR T-632/634 Super High Yield Universal Resettable Chip 32K
 XMSLEX2 Lexmark MasterSet Reset Box (USB)
 WB4059K Wiper Blade ***Replace each Cycle*** 5/ea
 FWT630 Felt Wand 10/pk

Instructions

DOC0324 Disassembly Instructions *Free with Order!*

Cartridges

CT630 Lexmark T-630 Compatible Cartridge *Call for Pricing!*
 CT632 Lexmark T-632 Compatible Cartridge



Part#

Description

Ship Qty

Lexmark T-640

Lexmark OEM # Prebate 64015SA (6K), 64004HA/015HA (21K)

Lexmark OEM # Prebate 64404XA/415XA/435XA (32K)

Lexmark OEM # Non-Prebate 64035HA (12K), 64435XA (32K)

1 Cartridge System

Toner

6640	T-640 Polyester Toner, 660g	Call for Pricing!
6690	T-640 Polyester Toner, 900g	

Drums and Rollers

D4059GH	Hanp Drum with gears	Call for Pricing!
---------	----------------------	-------------------

Chips and Blades

XLX640	Repair Chip (North America/South America) 21K	Call for Pricing!
XLX640E	Repair Chip (Europe) 21K	
XLX644	Repair Chip (North America/South America) 32K	
XLX644E	Repair Chip (Europe) 32K	
XIB1532	Repair Chip for IBM 1532/52/72	
WB4059K	Wiper Blade <i>**Replace each Cycle**</i>	5/ea

Instructions

DOC0366	Disassembly Instructions	Free with Order!
---------	--------------------------	------------------

Lexmark W-810

Lexmark OEM # 12L0250 (20K)

1 Cartridge System

Toner

810	Velvetone Lexmark W810 Toner, 600g <i>**20 per case**</i>	Call for Pricing!
-----	---	-------------------

Lexmark W-812

Lexmark OEM # 14K0050 (12K)

1 Cartridge System

Toner

812	Black Toner W812 550g <i>**25 per case**</i>	Call for Pricing!
-----	--	-------------------

Instructions

DOC0303	Disassembly Instructions	Free with Order!
---------	--------------------------	------------------

Minolta Pageworks 8

Minolta OEM # 1710399-002

2 Cartridge System



Engine used in the NEC SS870, Minolta PagePro 8, Minolta PagePro 1100L, QMS 1100

Toner

2010	Legend NEC 870 Toner, 135g <i>**25 per case**</i>	Call for Pricing!
390	PolyTone Universal Pageworks 8 90g Low yield <i>**25 per case**</i>	
3185	PolyTone Universal Pageworks 8 185g High yield <i>**25 per case**</i>	

Drums and Rollers

D302GH	HanP Optra E Drum W/gears	Call for Pricing!
--------	---------------------------	-------------------

Minolta Pageworks 18

Minolta OEM # 171-0398-001/4153-001

2 Cartridge System

Engine used in the Minolta Pageworks 18, NEC NEFAX805

Toner & Drum

8151	SUMMIT Toner, 300g <i>**10 per case**</i>	Call for Pricing!
D101H	SP-6, SP-4X Drum, No Gears	



Part#

Description

Ship Qty

Minolta PagePro 1350 Series

Minolta OEM # T 1710566-001, D 1710568-001



2 Cartridge System

Toner

1350 PolyTone Minolta pagePro 1350 toner 210g **25 per case** *Call for Pricing!*

Drums

D302GH HanP Optra E Drum W/gears *Call for Pricing!*

Chips, Blades, Parts

XPMIN1300HY Chip for Minolta PW 1350W HY *Call for Pricing!*

XEPL6200HY Chip for Epson EPL-6200 HY

Instructions

DOC0345 Disassembly Instructions *Free with Order!*

Minolta SP-101

Epson OEM#SO51009



1 Cartridge System

Engine used in Minolta SP101, Epson EPL-7000-8100, NEC Silent Writer 95/50

TECH TIP Epson and NEC LASER cartridges are NOT interchangeable. Minolta and NEC FAX cartridges are NOT interchangeable.

Toner

101 **SUMMIT** Toner, 360g **25 per case** *Call for Pricing!*

Drums

D101H HanP Minolta SP-101 Drum no gears *Call for Pricing!*

Blades, Seals, Parts

WB101 Wiper Blade **Replace Each Cycle!** *Call for Pricing!*

RB101 Recovery Blade **Mounts opposite wiper blade** 25/pk

PLUG101 Hopper Cap 25/pk

PCW101 Primary Corona Wire 5/pk

Instructions

DOC0200 Disassembly Instructions *Free with Order!*

Cartridges

C101EL Epson SP-101 Compatible Cartridge *Call for Pricing!*

C101NL NEC LSR SP101 Compatible Cartridge

Minolta SP-302

IBM OEM#69G8256



2 Cartridge System

Engine Used in Lexmark Optra E

Toner

2035 **Velvetone** Optra E Toner, 85g **25 per case** *Call for Pricing!*

3150 **SUMMIT** Toner, 150g **25 per case**

302 **SUMMIT** Toner, 85g **25 per case**

Drums

D302GH HanP Optra E Drum w/gears *Call for Pricing!*

Instructions

DOC0183 Disassembly Instructions for Toner *Free with Order!*

DOC0250 Disassembly Instructions for OPC Cartridge



Part#

Description

Ship Qty

Minolta SP-302 continued

Cartridges

C302T	Universal Laser Toner Cartridge <i>**Not for use in Fax Machines!**</i>	Call for Pricing!
CFO45ND	Universal Sharp FO45ND Compatible Fax Toner Cartridge <i>**Works in all 302 type Fax Machines**</i>	
C302D	Compatible Optra E Drum Cartridge	

Minolta SP-6

Epson OEM#SO51011



1 Cartridge System

Engine Used in Epson ActionLaser 1000/1500.

TECH TIP

Fax and laser printer cartridges using the Minolta SP-6 engine are NOT interchangeable.

TECH TIP

SP6/SP6X and Action laser 1600 cartridges are not interchangeable. The supplies to recycle them are the same, but the cartridges are physically different.

TECH TIP

Due to longevity problems associated with the charge felt inside the cartridge, we strongly recommend that the cartridge be tested at the darkest intensity before recycling to help ensure a properly working cartridge.

Toner

2016	Legend Epson 1000/1500 Toner, 200g <i>**25 per case**</i>	Call for Pricing!
------	---	-------------------

Drums

D101H	SP-6, SP-4X Drum, No Gears	Call for Pricing!
-------	----------------------------	-------------------

Blades and Parts

WBSP6	Wiper Blade <i>**Replace each Cycle**, for new style black carts ONLY</i>	Call for Pricing!
DC3200	Drum Shutter Cover for UX-3200/SP4X	

Instructions

DOC0229	Recharge Instructions	Free with Order!
---------	-----------------------	------------------

Cartridges

C1500	Epson 1000/1500 Compatible Cartridge	Call for Pricing!
-------	--------------------------------------	-------------------

Minolta SP-6X

Epson OEM#SO51016



1 Cartridge System

Engine Used in Epson ActionLaser 1600.

TECH TIP

Fax and laser printer cartridges using the Minolta SP-6 engine are NOT interchangeable.

TECH TIP

SP6/SP6X and Action laser 1600 cartridges are not interchangeable. The supplies to recycle them are the same, but the cartridges are physically different.

TECH TIP

Due to longevity problems associated with the charge felt inside the cartridge, we strongly recommend that the cartridge be tested at the darkest intensity before recycling to help ensure a properly working cartridge.

Toner

2016	Legend Epson 1000/1500 Toner, 200g <i>**25 per case**</i>	Call for Pricing!
------	---	-------------------

Drums

D101H	SP-6, SP-4X Drum, No Gears	Call for Pricing!
-------	----------------------------	-------------------

Blades and Parts

WBSP6	Wiper Blade <i>**Replace each Cycle**, for new style black carts ONLY</i>	Call for Pricing!
-------	---	-------------------

Instructions

DOC0229	Recharge Instructions	Free with Order!
---------	-----------------------	------------------



Part#

Description

Ship Qty

Minolta SP-A310

QMS OEM#1710171-001



1 Cartridge System

Engine used in QMS 2060/ Minolta Pageworks 20.

Toner

310	SUMMIT Toner, 310g <i>**50 per case**</i>	<i>Call for Pricing!</i>
2012	Minolta PW20 Toner, 310g <i>**25 per case**</i>	

Drums

DSPA310GH	HanP SP-A310 Drum w/gears	<i>Call for Pricing!</i>
-----------	---------------------------	--------------------------

Blades

WB310	Wiper Blade <i>**Replace each cycle**</i>	<i>Call for Pricing!</i>
-------	---	--------------------------

Mita LDC-550

Mita OEM#79382010



1 Cartridge System

Engine Used in Mita LDC-550 Series

Drums

D550GM	Mita LDC-550 Drum w/gears	<i>Call for Pricing!</i>
--------	---------------------------	--------------------------

Blades and Parts

WB550	Wiper Blade <i>**Replace each Cycle**</i>	<i>Call for Pricing!</i>
-------	---	--------------------------

Instructions

DOC0217	Mita LDC-550 Toner Cartridge Instructions	<i>Free with Order!</i>
---------	---	-------------------------

Mita LDC-750

Mita OEM # 37081011



2 Cartridge System

Engine Used in Mita LDC 750, NEC 555/595, Pitney Bowes 9410

Toner

9410TK	Toner Kit for Pitney Bowes 9410	<i>Call for Pricing!</i>
--------	---------------------------------	--------------------------

NEC LC-800

NEC OEM#20-010/20-020



2 Cartridge System

Engine Used in NEC LC-800 series. NOT THE SUPERScript 800 SERIES!

Toner

800GTK	Toner Kit 200g <i>**Direct Replacement Kit**</i>	<i>Call for Pricing!</i>
--------	--	--------------------------

Drums

D800M	NEC LC-800 Drum, no gears	<i>Call for Pricing!</i>
-------	---------------------------	--------------------------

Instructions

DOC0226	OPC Recycling Instructions	<i>Free with Order!</i>
---------	----------------------------	-------------------------

NEC LCR-50X / 50XII

NEC OEM# 20-061, 20-080



1 Cartridge System

Engine Used in NEC SuperScript 660/860 Series



Due to longevity problems associated with the charge felt inside the cartridge, we strongly recommend that the cartridge be tested at the darkest intensity before recycling to help ensure a properly working cartridge. A worn charge felt assembly will cause vertical grey shading. At this time, no replacements for the charge felt assembly are available.

Toner

660	Toner, 200g <i>**50 per case**</i>	<i>Call for Pricing!</i>
-----	------------------------------------	--------------------------

Blades

WB660	Wiper Blade <i>**Replace each Cycle**</i>	<i>Call for Pricing!</i>
-------	---	--------------------------



Part#

Description

Ship Qty

NEC LCR-50X / 50XII *continued*

Instructions

DOC0247

Disassembly Instructions

Free with Order!

NEC Nefax 790

NEC OEM# S2519



2 Cartridge System

Engine Used in NEC 790/791

Cartridge Remanufacturing Supplies

790

SUMMIT Toner, 300g ***50 per case***

Call for Pricing!

WB790

Wiper Blade for NEC NeFax 790

NEC SuperScript 870



2 Cartridge System

→ See Minolta Pageworks 8

NEC SuperScript 1400



1 Cartridge System

→ See Samsung ML-6060

Okidata B-4200/4300

Okidata OEM # 42102901,42103001/421002801

2 Cartridge System

Toner

4240

Toner for Okidata B-4200/4300, 75g ***25 per case***

Call for Pricing!

4243

Toner for Okidata B-4200/4300, 180g ***25 per case***

Okidata C-5100

8 Cartridge System

Engine used in Okidata C-5100 Series

Toner

Toner Black

Call for Availability!

Toner Cyan

Call for Availability!

Toner Magenta

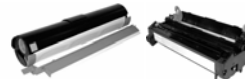
Call for Availability!

Toner Yellow

Call for Availability!

Okidata OL-400/800

Okidata OEM#52104201/56106601



2 Cartridge System

Engine used in Okidata OL-400, 800 Series

Toner

400

Toner Black,100g ***25 per case***

Call for Pricing!

400TKM

MICR Toner Kit 100g ***Use for printing checks***

Drums

D400GH

HanP Okidata 400/800 Drum w/gears

Call for Pricing!



Part#

Description

Ship Qty

Okidata OL-400/800 *continued*

Blades, Seals, Parts

FW400	Felt High Temp Wand	5/pk	<i>Call for Pricing!</i>
WB400	Wiper Blade <i>**Replace each cycle!**</i>		
PCW400	Primary Corona Wire	5/pk	
OZOK/OL	Ozone Filter		

Instructions

DOC0241	Installation instructions for Okidata 400/800 toner tubes		<i>Free with Order!</i>
DOC0203	Okidata 400/800 Toner tube refill instructions		
DOC0202	Okidata OL-400/800 OPC Instructions		

Cartridges

C400D	Okidata OL 400/800 OPC Compatible		<i>Call for Pricing!</i>
-------	-----------------------------------	--	--------------------------

Okidata OL-400e

Okidata OEM#52106701/56116801



2 Cartridge System

Engine Used in Okidata OL-400E, 800E series.

Toner

9400E	Toner, 60g <i>**25 per case**</i>		<i>Call for Pricing!</i>
-------	-----------------------------------	--	--------------------------



This cartridge uses a foam roller to clean the OPC Drum, not a wiper blade. The foam roller can be vacuumed clean and re-used. If the cartridge was used extensively after the change drum light came on, the cleaning roller may have gone bad (black streaks down the page). Test each cartridge before recycling to determine the roller's condition. At this time, there are no replacements for this roller.

Drums and Rollers

D9400EGH	HanP Okidata OL-400e Drum w/gears		<i>Call for Pricing!</i>
----------	-----------------------------------	--	--------------------------

Instructions

DOC0246	OPC Recycling Instructions		<i>Call for Pricing!</i>
---------	----------------------------	--	--------------------------

Okidata OL-1200

Okidata OEM#52109201



2 Cartridge System

Engine Used in Okidata OL-1200, OkiPage 16N

Toner and Drums

1200	Toner, 180g <i>**25 per case**</i>		<i>Call for Pricing!</i>
DOC0268	OL-1200 Recycling Instructions		<i>Free with Order!</i>

Okidata OP-4W

Okidata OEM#52106201



2 Cartridge System

Engine Used in Okidata OP-4W, OKIOffice 44

Toner

944	Toner, 35g <i>**25 per case**</i>		<i>Call for Pricing!</i>
-----	-----------------------------------	--	--------------------------

Okidata OP-8W

Okidata OEM # 52111701 (Type 6)

2 Cartridge System

Engine Used in Okidata OkiPage 6W, 8W

988	Black Toner, 60g <i>**25 per case**</i>		<i>Call for Pricing!</i>
-----	---	--	--------------------------



Part#

Description

Ship Qty

Okidata OP-10E

Okidata OEM # 52109001 (Type 5)

2 Cartridge System



Engine Used in Okidata OkiPage 10e, 10i, 10ex, 12i

1210 Toner 60g ***25 per case***
 1210TK Toner Kit 60g

Call for Pricing!

Panasonic KXFL-501/521

Panasonic OEM # KX-FA76

2 Cartridge System

Toner

501TK Compatible Toner Kit, 50g

Call for Pricing!

Panasonic KXFL-511/541

Panasonic OEM # KX-FA83

2 Cartridge System

Toner

541TK Compatible Toner Kit

Call for Pricing!

Panasonic KXP-4410

Panasonic OEM#KX-P453/KX-PDM4/5

2 Cartridge System



Engine Used in Panasonic KXP-4410, 4430, 4440, 5410

Blades and Parts

RB4410 Recovery Blade ***Mounts opposite wiper blade*** 25/pk
 PCW4410 Primary Corona Wire 5/pk

Call for Pricing!

Instructions

DOC0240 OPC Cartridge Recycling Instructions

Free with Order!

Panasonic KXP-4420

Panasonic OEM#KX-P451/KX-PDM2

3 Cartridge System



Engine Used in Panasonic KXP-4420

Drums

D4420M Panasonic KXP-4420 OPC Drum, no gears

Call for Pricing!

Blades, Seals, Parts

SS4420 Sealing Strip ***For toner cartridge***
 PLUG4420 Toner Fill Plug 25/pk
 FUSE4420 Fuse 1/16 A 10/pk

Call for Pricing!

***Replace each Cycle** in both the toner and drum!*

Instructions

DOC0100 Toner cartridge Disassembly Instructions
 DOC0206 OPC Cartridge Recycle Instructions

Free with Order!

Panasonic KXP-4450

Panasonic OEM#KX-P450/KX-PD1M

2 Cartridge System



Engine Used in Panasonic KXP-4450

Toner

4450TK Toner Kit 1-270g Bottle/1-FW/2-Waste ***Direct replacement Kit***

Call for Pricing!

Blades and Parts

WB4450 Wiper Blade ***Replace each Cycle***
 FUSE4420 Fuse 1/16 A For OPC ***Replace each Cycle*** 10/pk

Call for Pricing!



Part#

Description

Ship Qty

Panasonic KXP-4450 *continued*

Instructions

SG4450	Intravia's Service Guide	<i>Call for Pricing!</i>
DOC0205	OPC cartridge Recycle Instructions	<i>Free with Order!</i>

Cartridges

C4450D	Panasonic KX-P 4450 Compatible OPC Cartridge	<i>Call for Pricing!</i>
--------	--	--------------------------

Panasonic UF-550

Panafax OEM# UG-3313



1 Cartridge System

Engine Used in Panasonic UF-550/560/770/880/885/895/DF-1100/DX-1000/DX-2000.

Toner

9550	Toner, 340g <i>**25 per case**</i>	<i>Call for Pricing!</i>
------	------------------------------------	--------------------------

Drums and Rollers

D9550GH	HanP Panasonic UF-550/790 Drum w/Gears	<i>Call for Pricing!</i>
D9900GH	HanP Pitney Bowes-9900 Drum w/gears	

Blades, Seals, Parts

MRS9550	Mag Roller Sleeve (New)	<i>Call for Pricing!</i>
DB9550	Doctor Blade <i>**Change with new MRS**</i>	
WB9550	Wiper Blade <i>**Replace each cycle**</i>	
SS9550	Sealing Strip	10/pk
PCRAXS	Soft Primary Charge Roller	10/ea.

Cartridges

C3313	Compatible Panasonic UF-550 Cartridge	<i>Call for Pricing!</i>
-------	---------------------------------------	--------------------------

Panasonic UF-585

Panafax OEM # UG3350



1 Cartridge System

Engine Used in Panafax UF-585/595

Toner

585	Toner for Panasonic UF-585/890 (UG-3350) <i>**25 per case**</i>	<i>Call for Pricing!</i>
-----	---	--------------------------

Drums and Blades

D585GH	HanP Panasonic UF 585/890 Drum w/gears	<i>Call for Pricing!</i>
WB585	Wiper Blade <i>**Replace each cycle**</i>	
DB585	Doctor Blade <i>**Replace each cycle**</i>	5/ea.

Instructions

DOC0285	Recycling Instructions	<i>Free with Order!</i>
---------	------------------------	-------------------------

Panasonic UF-744

Panasonic OEM#UG3309



1 Cartridge System

Engine Used in Pentax UF-744

Drums

D9800G	HanP PB-9800 Drum w/gears	<i>Call for Pricing!</i>
D744GH	HanP Panasonic UF-744 Drum W/gears	

Blades, Seals, Parts

WB744	Wiper Blade <i>**Replace each Cycle**</i>	<i>Call for Pricing!</i>
FW744	Felt Wand	5/pk
SS744	Sealing Strip	10/pk



Part#

Description

Ship Qty

Panasonic UF-744 continued

Parts

ROLLER744	Air Gap Roller	10/pk	Call for Pricing!
PLUG744	Fill Plug	25/pk	
TAB744	Sensor Tab	25/pk	

Instructions

DOC0184	Recycling Instructions		Free with Order!
---------	------------------------	--	------------------

Panasonic UF-790

Panafax OEM# UG-5510



1 Cartridge System

Engine Used in Panasonic UF-790/DX800

Toner

585	Toner for Panasonic UF-585/890 (UG-3350) **25 per case**		Call for Pricing!
-----	--	--	-------------------

Drums and Blades

D585GH	HanP Panasonic UF 585/890 Drum w/ gears		Call for Pricing!
WB585	Wiper Blade **Replace each cycle**		
DB585	Doctor Blade **Replace each cycle**	5/ea.	

Panasonic UF-890

Panafax OEM # UG-5520



1 Cartridge System

Engine Used in Panafax UF-890/990

Toner

9550	Toner, 340g **25 per case**		Call for Pricing!
------	-----------------------------	--	-------------------

Drums and Rollers

D9550GH	HanP Panasonic UF-550/790 Drum w/ Gears		Call for Pricing!
---------	---	--	-------------------

Blades, Seals, Parts

MRS9550	Mag Roller Sleeve (New)		Call for Pricing!
DB9550	Doctor Blade **Change with new MRS**		
WB9550	Wiper Blade **Replace each cycle**		
SS9550	Sealing Strip	10/pk	
PCRAXS	Soft Primary Charge Roller	10/ea.	

Pentax PL-0240

OTC OEM#LM10000C100



3 Cartridge System

Engine Used in OTC Lasermatrix Model 2,3 Pentax PL-0241

Drums

D240GM	Pentax 240 Drum w/ gears		Call for Pricing!
--------	--------------------------	--	-------------------

Instructions

DOC0237	OPC Cartridge Recycling Instructions		Free with Order!
---------	--------------------------------------	--	------------------

Ricoh 2000L (TYPE 1135/1435)

Ricoh OEM # Type 1135



1 Cartridge System

Engine Used in Ricoh FAX 1900L, 2000L, Savin 3651

Toner

1135	SUMMIT Toner 180gm **25 per case**		Call for Pricing!
------	---	--	-------------------



Part#

Description

Ship Qty

Ricoh 2000L (TYPE 1135/ 1435) continued

Drums and Blades

D1135GH	HanP Ricoh 1135 Drum with Gears		Call for Pricing!
WB1135	Wiper Blade		
FW1135	Felt Wand	10/pk	

Instructions

DOC0297	Toner Cartridge Disassembly Instructions		Free with Order!
---------	--	--	------------------

Ricoh 2700L (TYPE 150)

Ricoh OEM#TYPE 100/150



2 Cartridge System

Engine Used in Ricoh 2700L

TECH TIP

This cartridge has very small fill holes. To fill the cartridge, make a funnel out of paper and pour the toner in. Standard size for SM-150 cartridge is 265g, SM-100 holds 240g.

Toner

2700	SUMMIT Toner 265gm **25 per case**		Call for Pricing!
------	------------------------------------	--	-------------------

Blades and Seals

FW2700	Felt Wand	5/pk	Call for Pricing!
SS150	Sealing Strip	10/pk	

Instructions

DOC0188	Toner Cartridge Disassembly Instructions		Free with Order!
---------	--	--	------------------

Cartridges

C150T	Ricoh Type 150 Toner Cartridge		Call for Pricing!
C150D	Ricoh Type 150 Drum Cartridge		

Ricoh 3200 (TYPE 30)

Ricoh OEM#TYPE30



2 Cartridge System

Engine Used in Ricoh 3200 Fax

Toner

3200RTK	Recycled Toner Kit 170g **Direct Replacement Kit**		Call for Pricing!
3200	3200 Toner 170g **50 per case**		

Blades

TECH TIP

When recycling the toner cartridge, be sure to get all the waste toner out and replace the recovery blade.

Instructions

DOC0201	Toner Disassembly Instructions		Free with Order!
---------	--------------------------------	--	------------------

Ricoh Aficio 200

Ricoh OEM # 889613



2 Cartridge System

Engine Used in Ricoh Aficio 200/250

Toner

TCA200	Ricoh Aficio 200/250 Toner 216g		Call for Pricing!
--------	---------------------------------	--	-------------------

Drum Cartridge Remanufacturing Supplies

D200GF	Ricoh Aficio 200 OPC Drum		Call for Pricing!
SSA200	Sealing Strip	10/pk	
WB200	Wiper Blade for the Aficio 200/250		



Part#

Description

Ship Qty

Ricoh Aficio 340

OEM# 885194



2 Cartridge System

Engine Used in Ricoh Aficio 340/350/355

Toner

TCA340 Ricoh Aficio 340/350/355 Toner

Call for Pricing!

Ricoh Aficio 400

OEM# 885144



2 Cartridge System

Engine Used in Ricoh Aficio 400/401/500

Toner

TCA400 Ricoh Aficio 400/401/500 Toner 700gm

Call for Pricing!

Ricoh AP-2000 (TYPE 2000)

Ricoh OEM # TYPE 2000



1 Cartridge System

Engine Used in Ricoh AP-2000, NX700

Drums

D2020GH HanP Ricoh AP-2000 Drum w/gears

Call for Pricing!

Instructions

DOC0295 Toner Cartridge Disassembly Instructions

Free with Order!

Samsung CLP-500

OEM # CLP500D7K, CLP500D5C, CLP500D5M, CLP500D5Y

4 Cartridge System

Toner

500K Samsung CLP-500 Black Toner, 240g **20 per case**
 500C Samsung CLP-500 Cyan Toner, 240g **20 per case**
 500M Samsung CLP-500 Magenta Toner, 240g **20 per case**
 500Y Samsung CLP-500 Yellow Toner, 240g **20 per case**

Call for Pricing!

Parts

PLUGCLP500 Fill Plug for CLP-500/510 Cartridges 100/pk
 FRCLP500 Reset Resistor for CLP-500 Cartridges 10/pk

Call for Pricing!

Samsung CLP-510

OEM # CLP510D7K, CLP510D5C, CLP510D5M, CLP510D5Y

4 Cartridge System

Toner

510K Samsung CLP-510/ Xerox Phaser 6100 Black Toner, 200g
 510C Samsung CLP-510/ Xerox Phaser 6100 Cyan Toner, 200g
 510M Samsung CLP-510/ Xerox Phaser 6100 Magenta Toner, 200g
 510Y Samsung CLP-510/ Xerox Phaser 6100 Yellow Toner, 200g

Call for Pricing!

Reset Devices and Parts

XMSSAM Samsung Masterset USB Reset Box
 YASCBL510 CLP-510 Reset Cable for Masterset USB Reset Box **Resets OEM Chips**
 PLUGCLP500 Fill Plug for CLP-500/510 Cartridges 100/pk

Call for Pricing!



Part#

Description

Ship Qty

Samsung FS-5000 (P8E)

(XEROX P8E) Xerox OEM # 113R296



1 Cartridge System

Toner

7930	Toner, 130g **25 per case**	Call for Pricing!
7960	Toner, 190g **25 per case**	
1603	Xerox P8e Toner, 140g **25 per case**	
7930B	Bulk Toner, 10kg Bag	

Drums

DP8EGH	HanP Samsung FS-5000 Drum w/gears	Call for Pricing!
--------	-----------------------------------	-------------------

Blades, Seals, Parts, Fuses

WBP8E	Wiper Blade	5/ea	Call for Pricing!
DBP8E	Doctor Blade for the Xerox P8E/E310	5/ea	
PCRP8E	PCR for Xerox P8E/E310		
PCR7800	New PCR for Samsung MSYS 7800		
MRSP8E	Developer Roller for Xerox P8E/E310		
SSP8E	Sealing Strip	10/pk	
FUSEP8E	Cartridge Reset Fuse **Replace each cycle**	10/pk	

Instructions

DOC0272	Cartridge Disassembly Instructions	Free with Order!
---------	------------------------------------	------------------

Samsung ML-1210

Lexmark OEM# 10S0150



1 Cartridge System

Engine Used in Lexmark E210/Samsung ML 1210 Series

Toner

2099	Velvetone OPTRA E210 Toner, 60g **25 per case**	Call for Pricing!
210	Toner for Lexmark E210/Samsung ML-1210, 65g **25 per case**	
210M	MICR Toner for Lexmark E210/Samsung ML-1210, 125g	
7930B	Bulk Toner, 10kg Bag	

Drums, Rollers, Blades, and Parts

DE210GH	HanP Drum With Gears for E-210/ML-1210	Call for Pricing!
WBE210	Wiper Blade	5/ea
DBE210	Doctor Blade	5/ea
PCRE210	Primary Charge Roller for the ML-1210, E210, ML4520, SF5100	
MRS1210	Developer Roller for ML-1210	
MRSE210	Developer Roller for ML-4500/SF-5100	
UTCML1210	Universal Top Cover ML-1210/E210/Phaser 3210/Ricoh 1465/Xerox 3110	

Instructions

DOC0288	Toner Cartridge Disassembly Instructions	Free with Order!
---------	--	------------------

Cartridges

CML1210	Samsung ML-1210 Compatible Cartridge	Call for Pricing!
CML4500	Samsung ML-4500 Compatible Cartridge	

Samsung ML-1610

OEM # ML1610D2

1 Cartridge System

Toner

1600	Toner for Samsung 1610/Dell-1100, 60g **25 per case**	Call for Pricing!
------	---	-------------------

Drums

D1610GH	HanP Drum with gears	Call for Pricing!
---------	----------------------	-------------------



Part#

Description

Ship Qty

Samsung ML-1610 *continued*

Blades and Parts

WB1610	Wiper Blade		<i>Call for Pricing!</i>
DB1610	Doctor Blade	5/ea	
FUSE5100	Replacement Fuse for Dell-1100 <i>Replace each cycle!</i>	5/pk	

Instructions

DOC0365	Toner Cartridge Disassembly Instructions		<i>Free with Order!</i>
---------	--	--	-------------------------

Samsung ML-1650

OEM# ML-1650A8/106R00462



1 Cartridge System

Toner

6050	Toner for ML-6000/ML1650, 190g <i>**25 per case**</i>		<i>Call for Pricing!</i>
------	---	--	--------------------------

Drums, Rollers, Seals

D6060GH	HanP Drum w/gears		<i>Call for Pricing!</i>
MRSP8E	Mag Roller Sleeve		
SSP8E	Sealing Strip	10/pk	

Instructions

DOC0310	Toner Cartridge Disassembly Instructions		<i>Free with Order!</i>
---------	--	--	-------------------------

Samsung ML-1710/1750

OEM# ML-175003



1 Cartridge System

Toner

1710	Samsung ML-1710 series toner, 75g <i>**25 per case**</i>		<i>Call for Pricing!</i>
1750	PolyTone Samsung ML-1710 series toner, 75g		

Drums, Blades, and Parts

D1710GH	HanP long life Drum with gears		<i>Call for Pricing!</i>
WB1710	Wiper Blade for Samsung ML-1710/2250	5/ea	
DB1710	Doctor Blade for Samsung ML-1710/2250	5/ea	
UTCML1710	Universal Top Cover ML-1710/SCX4216/ Phaser 3120/3130/PE16/X215/FX16/1130L		

Instructions

DOC0332	Toner Cartridge Disassembly Instructions		<i>Free with Order!</i>
---------	--	--	-------------------------

Cartridges

CML1710	Universal Samsung 1710/SCX 4216 Compatible Cartridge		<i>Call for Pricing!</i>
---------	--	--	--------------------------

Samsung ML-2010

OEM# ML-2010D3 (3K)

1 Cartridge System

Toner

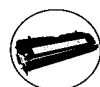
3122	Samsung ML-2010, Xerox 3122 Toner, 85g <i>**25 per case**</i>		<i>Call for Pricing!</i>
------	---	--	--------------------------

Drums and Blades

D1610GH	HanP Drum with gears		<i>Call for Pricing!</i>
WB1610	Wiper Blade		
DB1610	Doctor Blade	5/ea	

Instructions

DOC0365	Toner Cartridge Disassembly Instructions		<i>Free with Order!</i>
---------	--	--	-------------------------



Part#

Description

Ship Qty

Samsung ML-2150

OEM# ML-2150D8/XAA (8K)



1 Cartridge System

Toner

2150	Samsung ML-2150 toner for 8K cartridges, 160g	Call for Pricing!
2160	PolyTone Samsung ML-2150 toner, 160g	
2550	PolyTone Samsung ML-2550 toner for 10K cartridges, 190g	
3450	PolyTone Xerox Phaser 3450 toner for 5K cartridges, 100g	
2150M	MICR Toner, 220g	

Drums, Blades, Seals

D2150GV	Velvetone Drum with Gears	Call for Pricing!
SSP8E	Gold Colored Seal	10/pk
WB2150K	Wiper Blade for Samsung ML2150/2550	5/ea

Chips

XSA2150HR	Resetable replacement chip for ML-2150D8/XAA cartridge	Call for Pricing!
XSA2550HR	Resetable replacement chip for ML-2550DA/XAA cartridge	
XSA3450LR	Resetable replacement chip for Xerox 106R00687	
XSA3450HR	Resetable replacement chip for Xerox 106R00688	
XSA3420HR	Resetable replacement chip for Xerox Phaser 3420	
YASCBL2150	Reset Cable Assembly for Samsung 2150 (for use with XMSSAM)	
XMSSAM	Samsung/Xerox MasterSet Reset Box	

Instructions

DOC0329	Toner Cartridge Disassembly Instructions	Free with Order!
---------	--	------------------

Samsung ML-2250

OEM# ML-2250D5/XAA (5K), ML-2250DA/XAA (10K)



1 Cartridge System

Toner

4720	Samsung ML-2250 toner for 5,000 pg cartridges, 120g	Call for Pricing!
2250	PolyTone Samsung ML-2250 Toner, 120g	
1710	Samsung ML-1710/2250 toner for 3,000 pg cartridges, 75g	

Drums and Rollers

D2250GH	HanP Long Life Drum with gears	Call for Pricing!
D2250GV	Velvetone Drum with gears	

Chips, Blades, Parts

XSA4720LR	Resetable replacement Chip for Samsung SXC4720D3/XAA cartridge	Call for Pricing!
XSA4720HR	Resetable replacement Chip for Samsung SXC4720D5/XAA cartridge	
XSA1600LR	Resetable replacement Chip for Dell 310-5416 cartridge	
XSA1600HR	Resetable replacement Chip for Dell 310-5417 cartridge	
XSA3150LR	Resetable replacement Chip for Xerox Phaser 3150 109R00746 cartridges	
XSA3150HR	Resetable replacement Chip for Xerox Phaser 3150 109R00747 cartridges	
XSAP120LR	Resetable replacement Chip for Xerox WC PE120 109R00601 cartridges	
XSAP120HR	Resetable replacement Chip for Xerox WC PE120 109R00606 cartridges	
YASCBL2150	Reset Cable Assembly for Samsung 2150 (for use with XMSSAM)	
XMSSAM	Dell/Samsung/Xerox MasterSet Reset Box	
WB1710	Wiper Blade for Samsung ML-1710/2250	

Instructions

DOC0353	Toner Cartridge Disassembly Instructions	Free with Order!
---------	--	------------------



Part# Description Ship Qty

Samsung ML-6000



OEM# ML+6000 D6

1 Cartridge System

Toner

6050 Toner for ML-6000/ML-1650, 190g **25 per case** *Call for Pricing!*

Drums

DP8EGH HanP Drum w/ gears **50 per case** *Call for Pricing!*

Instructions

DOC0308 Toner Cartridge Disassembly Instructions *Free with Order!*

Samsung ML-6060



NEC OEM# 20-152, Xerox OEM# 106R442

1 Cartridge System

Toner

1414 Toner for NEC SuperScript 1400, 190g **25 per case** *Call for Pricing!*

2094 NEC 1400 Toner, 190g

Drums, Seals

D6060GH HanP Drum with Gears *Call for Pricing!*

SSP8E Sealing Strip 10/pk

Chips, Blades, Parts

WB6060 ML6060 Wiper Blade *Call for Pricing!*

Instructions

DOC0283 Toner Cartridge Disassembly Instructions *Free with Order!*

Samsung ML-7000



OEM # ML+7000 D8

1 Cartridge System

Toner

7700 Toner, 210g *Call for Pricing!*

Drums

DML7000GH HanP Drum with Gears *Call for Pricing!*

Instructions

DOC0301 Toner Cartridge Disassembly Instructions *Free with Order!*

Samsung QL-85 (4508)



(Xerox 4508) Xerox OEM # 113R265

1 Cartridge System

Toner

4508 Toner, 150g *Call for Pricing!*

Drums

D4508GH HanP Drum w/ gears **50 per case** *Call for Pricing!*

Samsung SCX-4216



OEM# SCX-4216D3

1 Cartridge System

Toner

1710 Samsung ML-1710 series toner, 75g **25 per case** *Call for Pricing!*

1750 PolyTone Samsung ML-1710 series toner, 75g **25 per case**

2150 Toner, 160g **25 per case**



Part#

Description

Ship Qty

Samsung SCX-4216 *continued*

Drums, Rollers, Blades

D1710GH	HanP long life Drum with gears		<i>Call for Pricing!</i>
FUSE5100	Replacement Fuse for SF5100 <i>Replace each cycle!</i>	5/pk	
WB1710	Wiper Blade for Samsung ML-1710/2250	5/ea	
DB1710	Doctor Blade for Samsung ML-1710/2250	5/ea	

Instructions

DOC0328	Toner Cartridge Disassembly Instructions		<i>Free with Order!</i>
---------	--	--	-------------------------

Cartridges

CML1710	Universal Samsung 1710/SCX 4216 Compatible Cartridge		<i>Call for Pricing!</i>
---------	--	--	--------------------------

Samsung SCX-6320

OEM # SCX6320D8, SCX6320R2

1 Cartridge System

Toner

6320	Toner for Samsung 6320/Xerox C20/M20, 235g <i>**25 per case**</i>		<i>Call for Pricing!</i>
------	---	--	--------------------------

Reset Devices

XMSSAM	Samsung Masterset USB Reset Box		<i>Call for Pricing!</i>
YASCBL6320	Reset Cable for Samsung SCX-6320 Cartridges <i>**Resets OEM Chips**</i>		

Samsung SF-555P

OEM # SF-550D3

1 Cartridge System



Toner

5100	Toner, 90g <i>**25 per case**</i>		<i>Call for Pricing!</i>
------	-----------------------------------	--	--------------------------

Drums, Rollers

DE210GH	HanP Drum With Gears for E-210/ML-1210		<i>Call for Pricing!</i>
MRSE210	Developer Roller for ML-4500/SF-5100		
PCRE210	Primary Charge Roller for ML-4500/SF-5100		
FUSE5100	Replacement Fuse for SF5100 <i>Replace each cycle!</i>	5/pk	

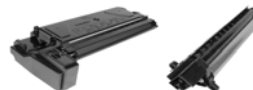
Instructions

DOC0333	Toner Cartridge Disassembly Instructions		<i>Free with Order!</i>
---------	--	--	-------------------------

Samsung SF-830

OEM # SCX-5312D6

2 Cartridge System



Toner

2163	Velvetone Workcentre M15 Toner, 235g <i>**25 per case**</i>		<i>Call for Pricing!</i>
------	--	--	--------------------------

Instructions

DOC0311	Toner Cartridge Disassembly Instructions		<i>Free with Order!</i>
DOC0336	Drum Cartridge Disassembly Instructions		

Samsung SF-5100

OEM # TDR-510P/SF-5100 D3

1 Cartridge System



Toner

5100	Toner, 90g <i>**25 per case**</i>		<i>Call for Pricing!</i>
------	-----------------------------------	--	--------------------------

Drums

DE210GH	HanP Drum With Gears for E-210/ML-1210		<i>Call for Pricing!</i>
---------	--	--	--------------------------



Part#

Description

Ship Qty

Samsung SF-5100 continued

Rollers and Parts

MRSE210	Developer Roller for ML-4500/SF-5100		Call for Pricing!
PCRE210	Primary Charge Roller for ML-4500/SF-5100		
FUSE5100	Replacement Fuse for SF5100 <i>Replace each cycle!</i>	5/pk	
UTCSF5100	Universal Cover SF-5100/ML-5100/ML-4500/WC Pro 580		

Instructions

DOC0307	Toner Cartridge Disassembly Instructions		Free with Order!
---------	--	--	------------------

Samsung SF-5500 (DEX625)

(Dex 625) Dex OEM # 6950



1 Cartridge System

Drums, Blades, Fuses

WB625	Wiper Blade		Call for Pricing!
FUSEP8E	Cartridge Reset Fuse <i>**Replace each cycle**</i>	10/pk	

Sharp AL-1000

(Xerox XD-100) Xerox OEM # 6R914/13R551



2 Cartridge System

Toner and Developers

8810	SUMMIT Toner 220g <i>**25 per case**</i>		Call for Pricing!
9810	SUMMIT Developer 190g <i>**25 per case**</i>		

Drums and Blades

DXD100G	HanP Xerox XD Drum, w/gears		Call for Pricing!
WBXD100	Wiper Blade	5/ea	

Seals and Chips

SSXD100	OEM Style Seal for XD100/AL1000/XC800/Z835	10/pk	Call for Pricing!
XER972R	Reset Chip for Work Centre Pro 16		
XER988R	Reset Chip for Xerox Pro 215		
XMS16FX	Sharp/Xerox MasterSet Reset Box		

Instructions

DOC0254	Toner Cartridge Disassembly Instructions		Free with Order!
DOC0255	OPC Cartridge Disassembly Instructions		

Cartridges

CR914T	Universal Sharp/Xerox Toner Unit		Call for Pricing!
CR551D	Universal Sharp/Xerox Drum Unit		

Sharp AR-150

Sharp AR-150ND/AR-150DR



2 Cartridge System

Toner and Developers

8810	SUMMIT Toner 220g <i>**25 per case**</i>		Call for Pricing!
9810	SUMMIT Developer 190g <i>**25 per case**</i>		

Drums and Blades

DXD100G	HanP Xerox XD Drum, w/gears		Call for Pricing!
WBXD100	Wiper Blade		

Seals and Chips

SSXD100	OEM Style Seal for XD100/AL1000/XC800/Z835	10/pk	Call for Pricing!
XSH150	Reset Chip for AR-150/150N/151/155/155N (AR150TD)		
XSH150A	Reset Chip for AR-150/150N/150F/151/155/155N (AR150DC-Australia)		
XSH150E	Reset Chip for AR-120/AR150E		



Part#

Description

Ship Qty

Sharp AR-150 *continued*

Chips

XMS16FX Sharp/Xerox MasterSet Reset Box *Call for Pricing!*

Instructions

DOC0254 Toner Cartridge Disassembly Instructions *Free with Order!*

DOC0255 OPC Cartridge Disassembly Instructions

Sharp AR-152

Sharp OEM # AR-152NT



3 Cartridge System

Toner and Developers

8552 Toner 210 gm ***25 per case*** *Call for Pricing!*

9552 Developer 170gm ***25 per case***

Drums, Blades, Chips

DXD100G HanP Drum W/Gears *Call for Pricing!*

WBXD100 Wiper Blade

XSH168XU Reset Chip for AR-151/152/153E/156/157E/168S (AR152NT, AR152T)

XSHF55 Reset Chip for FO-4400/FO-4450/FO-DC550

Instructions

DOC0291 Toner Cartridge Disassembly Instructions *Free with Order!*

Sharp AR-160

Sharp OEM # AR-200TD



2 Cartridge System

Toner and Developers

8160 Toner 610 gm ***20 per case*** *Call for Pricing!*

9160 Developer 395 gm ***25 per case***

1642B Sharp AR 160 Toner Bag, 10kg

Drums, Blades, Rollers, Seals

D160G HanP Sharp AR 160 Drum W/Gears *Call for Pricing!*

WB160 Wiper Blade 5/ea

SS160 OEM Style Seal for AR 160/200 10/pk

DEVBL160 Developer Roller Retaining Blade 25/pk

Instructions

DOC0257 Toner Cartridge Disassembly Instructions *Free with Order!*

Sharp AR-163

Sharp OEM # AR-201NT



2 Cartridge System

Toner

8163 Toner 475gm ***20 per case*** *Call for Pricing!*

9163 Developer 400gm ***20 per case***

Drums, Blades, Chips

D160G HanP Drum w/gears *Call for Pricing!*

WB160 Wiper Blade

XSH202NT Reset Chip for AR-162/163/164/201/202/207 (AR202NT, AR202T)

Instructions

DOC0289 Toner Cartridge Disassembly Instructions *Free with Order!*



Part#

Description

Ship Qty

Sharp AR-250/405

Sharp OEM # AR400NT



3 Cartridge System

Toner

TCAR330

Sharp AR-250/405, Toner, 710gm

Call for Pricing!

Sharp AR-270

Sharp OEM # AR-270NT, AR-270ND, AR-270DR

3 Cartridge System

Toner

2190

Sharp AR-270 Toner, 745g

Call for Pricing!

Chips

XSH270XU

Sharp AR-270 Universal Chip

Call for Pricing!

Sharp AR-5015

Sharp OEM # AR-016T, AR-202DV, AR-016DR

3 Cartridge System

Toner

8826

Sharp AR-016T Toner, 535g

Call for Pricing!

9816

Sharp AR-016TD/AR-202DV Developer, 400g

Chips

XSH016T

Sharp AR-016T Chip (Europe)

Call for Pricing!

Sharp AR-5316

Sharp OEM # AR-016TD, AR-016DR

2 Cartridge System

Toner

8816

Sharp AR-016TD Toner, 195g

Call for Pricing!

9816

Sharp AR-016TD/AR-202DV Developer, 400g

Chips

XSH016TD

Sharp AR-016TD Chip

Call for Pricing!

Sharp JX-9200

Sharp OEM # FO28ND/Xerox 6R916



2 Cartridge System

Toner

2600

Toner, 70gm **25 per case**

Call for Pricing!

7800

Toner, 100gm **25 per case**

1602

Xerox P8 Toner, 80g **25 per case**

Drums, Blades, Chips

DXE80H

HanP Xerox XE Drum w/Gears

Call for Pricing!

Instructions

DOC0256

Toner Cartridge Disassembly Instructions

Free with Order!

Sharp JX-9500

Sharp OEM#JX-95NT



3 Cartridge System

Engine used in Sharp JX-9500

Toner

9500BTL

Sharp 9500 Toner, 175g **50 per case**

Call for Pricing!

9500TKM

Sharp JX-9500 MICR Toner Kit



Part#

Description

Ship Qty

Sharp JX-9500 *continued*

Blades, Seals, Parts

FW9500 Felt Wand with Nomex Felt Pad 5/pk *Call for Pricing!*

Replace each cycle!

WB9500 Wiper Blade ***Replace each cycle!***

TECH TIP

Fast Acting/Glass type: Fuse must be replaced each cycle on the OPC Cart. 0.08mA, 250V

No longer available from SUMMIT

Instructions

DOC0223 Recycling Instructions *Free with Order!*

SG9500 Intravia's Service Guide

Sharp JX-9600

TI OEM# 2633476-0001, Sharp OEM#JX-96ND/JX-96DR

2 Cartridge System

Engine Used in Sharp JX-9600, Texas Instrument Microlaser Pro 600

Toner and Developer

9600 Toner, 360g ***25 per case*** *Call for Pricing!*

9650 Developer, 200g ***25 per case***

Blades, Seals, Parts

SS9600 Adhesive Sealing Strip 10/pk *Call for Pricing!*

FUSE9600 Toner Reset Fuse 10/pk

Instructions

DOC0182 Toner cartridge Disassembly Instructions *Free with Order!*

Sharp Z-20

Xerox OEM#6R737

2 Cartridge System



Engine Used in Xerox 5201, Sharp Z-20

TECH TIP

Sharp and Xerox cartridges are NOT interchangeable.

Toner and Developer

8152 Toner, 80gm ***25 per case*** *Call for Pricing!*

9152 Developer, 140g ***25 per case***

Instructions

SGSHARPZ Intravia's Service Guide *Call for Pricing!*

DOC0171 Toner Refill Instructions *Free with Order!*

Sharp Z-30

Xerox OEM#6R333

2 Cartridge System



Engine Used in Xerox 5220, Sharp Z-30

TECH TIP

Sharp and Xerox cartridges are NOT interchangeable.

Toner and Developer

8152 Toner, 80gm ***25 per case*** *Call for Pricing!*

9152 Developer, 140g ***25 per case***

Drums and Blades

WB9500 Wiper Blade ***Replace each cycle!*** *Call for Pricing!*

Instructions

SGSHARPZ Intravia's Service Guide *Call for Pricing!*

DOC0171 Toner Refill Instructions *Free with Order!*



Part#

Description

Ship Qty

Sharp Z-50/70

OEM#ZT50TD1, 6R343, 6R359/ZT50DR, 13R50, 13R55



2 Cartridge System

Engine Used in Xerox 5008, 5009, Sharp Z-50/70 series

TECH TIP

Xerox and Sharp cartridges are NOT interchangeable.

Toner and Developer

8158	Toner, 125g **25 per case**	Call for Pricing!
9158	Developer, 175g **25 per case**	

Drums

DZ70GF	Sharp ZT-50TD1 Fuji Drum w/gears	Call for Pricing!
--------	----------------------------------	-------------------

Blades and Seals

SSZ70	Plastic Seal	5/pk	Call for Pricing!
WBZ70	Wiper Blade		

Instructions

SGSHARPZ	Intravia's Service Guide	Call for Pricing!
DOC0212	OPC Drum Cart Instructions	Free with Order!
DOC0170	Toner Cartridge Instructions	

Cartridges

CZ50T	Sharp Z-50 Compatible Toner Cartridge	Call for Pricing!
CZ50D	Sharp Z-50 Compatible Drum Cartridge	
CR343T	Xerox 5008 Series Compatible Toner Cartridge	
CR50D	Xerox 5008 Compatible Drum Cartridge	
CR359T	Xerox 5009 Series Compatible Toner Cartridge	
CR55D	Xerox 5009 Series Compatible Drum Cartridge	

Sharp Z-835

Xerox OEM#6R881/13R544



2 Cartridge System

Engine Used in Xerox XC-800/1000, Sharp Z-835

TECH TIP

Sharp and Xerox cartridges are NOT interchangeable.

Toner and Developer

8835	Toner, 170g **25 per case**	Call for Pricing!
9835	Developer, 165g **25 per case**	

Drums, Blades and Parts

D835GH	HanP Z-835 drum, w/gears	Call for Pricing!
WB835	Wiper Blade **Replace each Cycle**	
SS835	OEM Style Seal for XC800/Z835	10/pk

Instructions

DOC0161	OPC Drum Cart Instructions	Free with Order!
DOC0162	Toner Cart Instructions	

Cartridges

CR881T	Universal Xerox/Sharp Compatible Toner	Call for Pricing!
CR544D	Universal Xerox/Sharp Compatible Drum	



Part#

Description

Ship Qty

TEC LB-1305

Xerox OEM#6R287T/13R73D



2 Cartridge System

Engine Used in Xerox 7041/7042



For Xerox 7041 machines, the alignment tabs on direct replacement cartridges must be modified.
Cut the Large tabs with wire cutters to be the same size as the smaller.

Drums

D1305H HanP TEC LB-1305 Drum no gears *Call for Pricing!*

Blades and Parts

WB1305 Wiper Blade - TEC 1305 (Square Corners) *Call for Pricing!*

Replace each Cycle

WB1306 Wiper Blade - TEC 1306 Drum Cart (Notched Corners)

TRC1305 Reset Counter, Black ***Replace each Cycle***

Instructions

DOC0215 OPC Recycling Instructions *Free with Order!*

Toshiba TF-531

Toshiba OEM# TK-02/05



2 Cartridge System

Engine Used in Toshiba TF-531 series

Toner

531TK Toner Kit *Call for Pricing!*

Xerox 1012

Xerox OEM#6R257/13R8



2 Cartridge System

Engine Used in Xerox 1012

Toner

1012 Toner Black, 400g ***25 per case*** *Call for Pricing!*

Drums

D1012M Xerox 1012 Drum, no gears *Call for Pricing!*

Instructions

DOC0218 Toner Tube Instructions *Free with Order!*

DOC0209 OPC Recycling Instructions

Cartridges

C1012D Xerox 1012 Compatible Copy Cartridge *Call for Pricing!*

Xerox 1025

Xerox OEM#6R121



3 Cartridge System

TC1025 Toner, 8oz 4/pk *Call for Pricing!*

Xerox 3600/7000

Engine Used in Xerox3600/7000

Toner

1229 Xerox 3600 Toner, 454g *Call for Pricing!*



Part#

Description

Ship Qty

Xerox 4525

Xerox OEM#113R00195



1 Cartridge System

Engine Used in Xerox 4525

Toner

2145	Xerox N4525 Toner, 1350g	Call for Pricing!
2097B	Xerox N4525 Bag Toner, 10kg	

Drums and Rollers

DN24GH	Xerox N24 Drum w/gears	Call for Pricing!
PCRN24	New Primary Charge Roller	

Blades

WBN24	Wiper Blade <i>**Replace each Cycle**</i>	Call for Pricing!
DBN24	Doctor Blade	

Chips

XL820R	Lexmark 820 Reset Chip	Call for Pricing!
XER195R	Reset Chip for Xerox 4525	

Xerox 5011

Xerox OEM#6R352/13R44



2 Cartridge System

Engine Used in Xerox 5011

Toner

1012	Toner Black, 400g <i>**25 per case**</i>	Call for Pricing!
------	--	-------------------

Drums

D1012M	Xerox 1012 Drum, no gears	Call for Pricing!
--------	---------------------------	-------------------

Blades, Seals and Chips

XER5011	New Reset Counter for OPC <i>**Replace each Cycle** Must be soldered in</i>	Call for Pricing!
---------	--	-------------------

Instructions

DOC0208	OPC Recharge Instructions	Free with Order!
---------	---------------------------	------------------

Cartridges

C5011D	Xerox 5011 Compatible Copy Cartridge	Call for Pricing!
--------	--------------------------------------	-------------------

Xerox 5012

Xerox OEM#6R257/13R19



2 Cartridge System

Engine Used in Xerox 5012/5014

Toner

1012	Toner Black, 400g <i>**25 per case**</i>	Call for Pricing!
------	--	-------------------

Drums

D1012M	Xerox 1012 Drum, no gears	Call for Pricing!
--------	---------------------------	-------------------

Blades, Seals and Chips

XER5012	New Reset Connector for OPC <i>**Replace each Cycle** Must be soldered in</i>	Call for Pricing!
---------	--	-------------------

Instructions

DOC0208	OPC Recharge Instructions	Free with Order!
---------	---------------------------	------------------

Cartridges

C5012D	Xerox 5012 Compatible Copy Cartridge	Call for Pricing!
--------	--------------------------------------	-------------------



Part#

Description

Ship Qty

Xerox 5018

Xerox OEM#6R244/13R9



2 Cartridge System

Engine Used in Xerox 5018 series

Toner

5018TK 1720	Toner Kit 2 pk <i>**Direct replacement Kit**</i> Xerox 5018 toner, 575g		<i>Call for Pricing!</i>
----------------	--	--	--------------------------

Blades, Seals and Parts

WB5034	Wiper Blade - Xerox 5018 (Metal with rubber edge) <i>**Replace each Cycle**</i>		<i>Call for Pricing!</i>
PCW5018	Primary Corona Wire	2/pk	

Instructions

DOC0221	Instructions for Copy Cartridge		<i>Free with Order!</i>
DOC0218	Toner Tube Instructions		

Xerox 5113

Xerox OEM#6R751/113R85



2 Cartridge System

Engine Used in Xerox 5113

Toner

5113	Toner Bottle, 240g <i>**10 per case**</i>		<i>Call for Pricing!</i>
------	---	--	--------------------------

Chips

XER80-18K	Reset Counter for OPC Cartridge 18K Yield		<i>Call for Pricing!</i>
XER80-36K	Reset Counter for OPC Cartridge 36K Yield		
XMSCOPIER	Xerox MasterSet Copier Reset Box <i>**Resets Summit and OEM Chips**</i>		

Xerox 5312

Xerox OEM# 6R379/113R62



2 Cartridge System

Engine Used in Xerox 5312

Toner

5312RK	Toner, 2x380g <i>**2 refills per kit**</i>	2ea/kit	<i>Call for Pricing!</i>
--------	--	---------	--------------------------

Chips

XER5312	Reset Counter for OPC Cartridge <i>**Replace each Cycle**</i> <i>**This counter is for use in North America only- Call for availability in other countries**</i>		<i>Call for Pricing!</i>
---------	--	--	--------------------------

Xerox 5318

Xerox OEM#6R364



2 Cartridge System

Engine Used in Xerox 5318 series

Toner

5318RK	Toner Kit, 2x460g <i>**2 refills per kit**</i>	2ea/kit	<i>Call for Pricing!</i>
XER56R	Reset Chip		
XMSCOPIER	Xerox MasterSet Reset Box		



Part#

Description

Ship Qty

Xerox DC 212



Xerox OEM#113R180/113R185

1 Cartridge System

Engine Used in Xerox DC212 series

Toner

212 Xerox DC 212 Toner, 820g *Call for Pricing!*

Drums and Blades

D212GH HanP Xerox DC212 drum w/gears *Call for Pricing!*

WB212 Wiper Blade for Xerox DC212

Chips

XER180R Reset Chip for 113R180 *Call for Pricing!*

XMSCOPIER Xerox MasterSet Reset Box

Xerox N24



Xerox OEM#113R00173

1 Cartridge System

Engine Used in Xerox N24/34/40/32

Toner

2075 **Velvetone** 2000 XRX N24 Toner, 1032g *Call for Pricing!*

2075B **Velvetone** 2000 XRX N24 Toner, 10kg

Drums and Rollers

DN24GH HanP N24 Drum w/gears *Call for Pricing!*

DN24GF Fuji N24 Drum w/gears

DXPN24GA XP24 Copier Drum w/gears

PCRN24 Primary Charge Roller

Blades and Seals

WBN24K Wiper Blade ***Replace each Cycle*** *Call for Pricing!*

DBN24 Doctor Blade

SSN24 Sealing Strip 10/pk

Reset Chips - See Chip Listing on Pages 8-11 For Complete Availability!

Remember with all Chips to Replace each Cycle

Instructions

DOC0168 N24 Cartridge Disassembly Instructions *Free with Order!*

Xerox P8E (Samsung FS-5000)



See Also Samsung FS-5000

1 Cartridge System

Toner

1603 Toner, 140g ***25 per case*** *Call for Pricing!*

7930 Toner, 160g ***25 per case***

7930B Toner P8e, E310, 312 10kg

Drums

DP8EGH Samsung FS-5000 Drum w/gears *Call for Pricing!*

Blades, Seals, Parts and Fuses

WBP8E Wiper Blade 5/ea *Call for Pricing!*

DBP8E Doctor Blade for the Xerox P8E/E310 ***Change with new MRS***

PCRP8E New PCR for Xerox P8E/E310

PCR7800 New PCR for Samsung MSYS 7800

MRSP8E New Developer Roller for Xerox P8E/E310

SSP8E Sealing Strip 10/pk

FUSEP8E Cartridge Reset Fuse ***Replace each cycle*** 10/pk

Instructions

DOC0272 Cartridge Disassembly Instructions *Free with Order!*